

Research models and associated services

CATALOG 2024

Price valid from 01/01/2024



PULSE 02

SBD 12

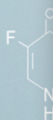
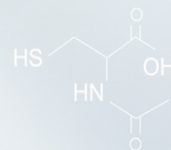
CONTACT

JANVIER LABS
Research models and associated services

Route des Chênes Secs
53941 Le Genest Saint Isle
FRANCE

T. +33 (0)2 43 02 11 91

Sales support: contact@janvier-labs.com
Scientific support: scientificsupport@janvier-labs.com



JANVIER LABS takes care of your models so you can devote yourself fully to your research projects!

Thanks to its unique site, the largest and most modern in Europe, JANVIER LABS provides you with experimental models of the highest level of quality.

We assure you of rigorous breeding conditions essential for uniformity and reproducibility of your experimental results: health status (SPF and SOPF), genetic stability, microbiota and animal welfare.

With more than 60 years dedicated to breeding and developing research models, JANVIER LABS ensures availability, responsiveness, and excellence, as well as transparency on the quality of its models, products and services.

Discover our new immunodeficient models such as NXG, NRG, BRGS and their humanized counterparts. You will also be able to discover our range of metabolic models. These are ideal for all projects dedicated to the study of obesity and metabolic disorders, such as NASH, diabetes, diabetic nephropathies ...

With JANVIER LABS, you benefit from a complete support which extends from the creation of your new models, their characterization by our experts and the breeding of preclinical cohorts, the preparation of your models in the laboratory, until their delivery by our dedicated carriers.

Throughout the year, you will discover the benefits of JANVIER LABS Innovation through our new models and services, which will complement our offer to best meet your needs.

Thomas Janvier
General Director



INDEX

- 6 • The largest and most advanced rodent breeding site in Europe
- 7 • A rigorous health policy, a constant concern for animal welfare, a unique and stable microbiota, a genetic management concept
- 8 • Research models
 - Weight of the animals during preparation and during transport
 - Strain characteristics
 - Health status
 - Transport of pregnant females and unweaned litters

9. MICE RESEARCH MODELS



STANDARD

INBRED MICE

- 10 • C57BL/6JRj
- 10 • C57BL/6NRj
- 10 • DBA/1
- 10 • DBA/2
- 11 • BALB/cByJRj
- 11 • BALB/cAnNRj
- 11 • BALB/cJRj
- 11 • C3H
- 12 • CBA
- 12 • FVB
- 12 • SJL
- 12 • 129S2
- 13 • B6 DIO
- 13 • NOD
- 13 • Old C57BL/6JRj

OUTBRED MICE

- 14 • SWISS
- 14 • NMRI

HYBRID MICE

- 15 • B6 D2F1
- 15 • B6 CBAF1
- 15 • B6 SJLF1
- 15 • CSJLF1
- 15 • C3D2F1
- 15 • B6 CF1/JRj

NATURAL MUTANT

- 16 • BKS Diabetic (db/db)
- 16 • BKS Diabetic control (db/+)
- 16 • B6 Obese (ob/ob)
- 16 • B6 Obese control (ob/+)
- 17 • B6 Albinos
- 17 • B6 Agouti
- 17 • FVB Hairless
- 17 • B6N Hairless
- 17 • Biozzi Asthmatique
- 17 • B6 J CD45.1 NEW

NATURAL IMMUNODEFICIENT

- 18 • Athymic Nude
- 18 • BALB/c Nude
- 18 • CB17-Scid
- 18 • NMRI Nude
- 19 • NOD-Scid
- 19 • B6 Nude
- 19 • CB17-Scid Nude

GENETICALLY ENGINEERED MODELS (GEM)

INDUCED IMMUNODEFICIENCIES

- 20 • NRG
- 20 • NXG
- 20 • B6 Rag2
- 20 • B6 Rag2yc sirpa
- 21 • NRG Ckit NEW
- 21 • NRG Nude
- 21 • B6 Rag2 Nude
- 21 • B6 yc
- 21 • B6 Rag2yc
- 21 • B6 Rag2yc sirpa Nude
- 21 • NOD yc

INDUCED IMMUNODEFICIENCIES WITH INCREASED FUNCTIONALITY

- 22 • BRGS A2DR2
- 22 • BRGS TSLP

HUMANIZED

- 23 • NRG HIS
- 23 • NXG HIS

HUMANIZED WITH INCREASED FUNCTIONALITY

- 23 • BRGS A2DR2 HIS
- 23 • BRGS TSLP HIS

24. RATS

RESEARCH MODELS



STANDARD

INBRED RATS

- 25 · DARK AGOUTI
- 25 · Fischer (F344)
- 25 · LEWIS
- 25 · Wistar Kyoto Normotensive
- 26 · BROWN NORWAY
- 26 · BLACK HOODED

OUTBRED RATS

- 27 · WISTAR
- 27 · SPRAGUE DAWLEY
- 27 · LONG EVANS
- 28 · FAWN HOODED
- 28 · Old WISTAR

NATURAL MUTANT

- 29 · SHR Hypertensive
- 29 · SPRAGUE DAWLEY Hairless

NATURAL IMMUNODEFICIENT

- 29 · ATHYMIC Nude rat
- 29 · FISCHER Nude
- 29 · LOU Nude

GENETICALLY ENGINEERED MODELS (GEM)

INDUCED IMMUNODEFICIENCIES

- 30 · SD Rag1 NEW
- 30 · SD RGS NEW

31. OTHER RODENTS

OTHER



OUTBRED

- 31 · Goldhamster
- 31 · Gerbille

32. ASSOCIATED SERVICES



BREED AND SECURE YOUR MODEL

- 33 · Cryopreservation
- 34 · Assisted reproduction
- 35 · Assisted reproduction
- 36 · Jax Sperm Cryo Kit

CUSTOMISE YOUR MODEL

- 37 · Embryo kit
- 37 · Customised models
- 38 · Customised breeding

PREPARE YOUR MODEL

- 39 · Biological products
- 40 · Surgery
- 41 · Experimental protocols

DELIVER / REPATRIATE YOUR MODEL

- 42 · An in-house transport service
- 42 · Weekly deliveries
- 42 · Packaging adapted to animal's health status
- 42 · Stress management for animal transportation

PASSION FOR BREEDING AND COMMITMENT TO RESEARCH FOR MORE THAN 60 YEARS

FOUNDED IN 1960 BY ROGER JANVIER, THE COMPANY HAS BECOME INTERNATIONAL AND REMAINS LOYAL TO THE VALUES OF ITS FOUNDER.

- ✕ Seeking excellence, going ever further for the quality of our rodents, products and services
- ✕ Ensuring customer satisfaction through flexibility, responsiveness and proximity of our teams
- ✕ Innovating by anticipating the needs of our customers
- ✕ Engaging with researchers to improve tomorrow's health

Up to now, more than 3,000 public and private laboratories trust us in more than 20 countries.

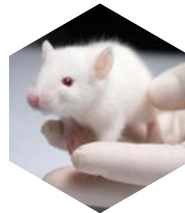


THE LARGEST AND MOST ADVANCED RODENT BREEDING SITE IN EUROPE



INNOVATION & CONTINUOUS IMPROVEMENT

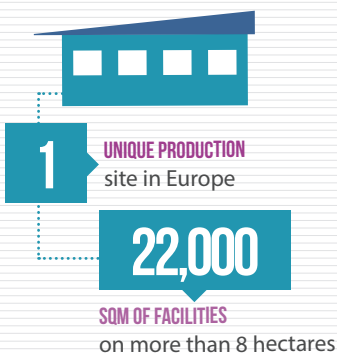
- > Millions of Euros reinvested each year in our production site
- > Ongoing development of new advanced technologies



CONTINUITY OF SUPPLY

We breed each strain in different production units in order to ensure their availability

● KEY FIGURES



Breeding capacity

3,000,000

RODENTS A YEAR



45,000

KM A WEEK TRAVELLED by our integrated transport department

3,000

CUSTOMERS on the 5 continents



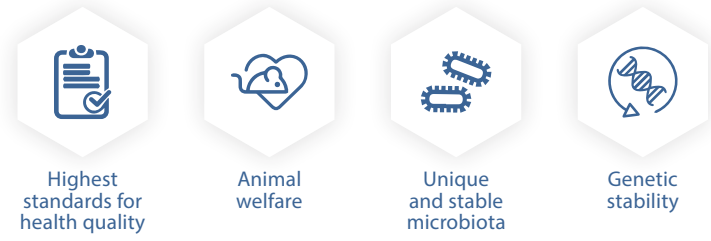
300

INTERNATIONAL employees



INTERNATIONAL PLAYER IN BIOMEDICAL RESEARCH

With the support of our teams of experts and our unique site in Europe, at the forefront of innovation and entirely dedicated to rodent breeding, we assure you of strict breeding conditions around 4 fundamental elements:



HIGHEST STANDARDS FOR HEALTH QUALITY

Led by a team of experts, our strict health policy provides the human, organisational and technical means necessary to ensure the highest health standards (SPF and SOPF).

- Transparency of health monitoring tests
- Independent laboratories
- Frequency of health monitoring tests beyond FELASA recommendations



ANIMAL WELFARE

We ensure the highest welfare of our rodents. At JANVIER LABS, animal welfare is a commitment, a value that fuels our passion as breeders.

- All our teams are regularly trained and permanently aware of animal welfare.
- We assure calm, docile and easy-to-handle animals. Animals handled several times a week
- Control of environmental parameters
- No mixture of species, for a calm environment which allows the expression of natural behaviour
- A department dedicated to continuous improvement of animal welfare and to the application of the 3Rs
- An independent ethics committee



A UNIQUE AND STABLE MICROBIOTA

All our models have the same microbiota which is studied, monitored and stable over time.

- Standardised breeding procedures on a unique site
- Regular controls of the microbiota by experts
- Consistency and homogeneity of environmental factors

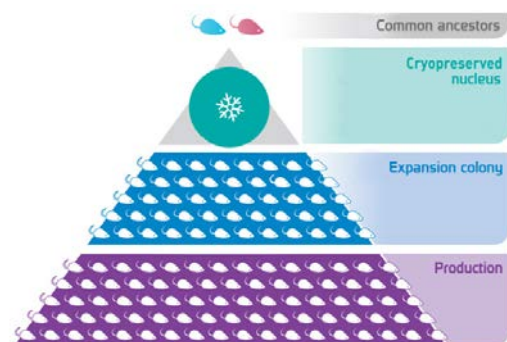
The genetics reliability of research models is one of the essential conditions for the success of research programmes

In order to provide researchers with research models with a high quality genetic, JANVIER LABS has developed a genetic management policy by putting in place essential rules for the genetics management of its models. This policy is based on modern breeding management tools such as: cryopreservation and embryo revitalization.

The JANVIER LABS GENETIC POLICY® allows us to ensure the genetic homogeneity of our strains delivered to the end user by performing rigorous genetic management at three levels (nucleus in cryopreserved embryo form, expansion colony and production colony). It protects our models from genetic drift.

The integration of modern techniques such as cryopreservation and revitalisation of embryos allows us to freeze our nucleus. Thus we slow down the evolution of the model, which increases by one generation every 25 to 50 years, instead of 2 generations per year.

JANVIER LABS can thus guarantee the genetic stability of all its models over time.



OUR RESEARCH MODELS

15 of the top 20 pharmaceutical and biotech companies and leading international research institutes have chosen JANVIER LABS as a unique partner for their research projects.

Aware that our models are an asset for biomedical research, and to prepare for tomorrow's challenges, JANVIER LABS has created key partnerships with renowned experts (Ciphe, Centre d'Immunophénomique, France) to develop new innovative humanised and transgenic models using emerging technologies for genome editing (CRISPR/Cas9) and characterisation, notably by immunophenotyping. These approaches serve to continuously improve the predictive and translational value of rodent models.

Choosing JANVIER LABS as your partner can significantly expand, strengthen and accelerate your research and development programmes, by accessing experts who have successfully generated thousands of animals at an unprecedented success rate.

CONCERNING THE WEIGHT OF THE ANIMALS DURING PREPARATION AND DURING TRANSPORT:

Weight of animals for shipment:

Weight of animals sold at age

If you specify a minimum weight and a maximum weight:
- When the requested difference is less than 4 g for mice or 30 g for rats, hamsters or gerbils, the price will then be increased by 6%.

Transient weight loss during transport:

Not all individuals react in the same way during transport due to the nature of their sensitivity or dominance behaviours for access to food and gel. **These factors can impact the weight of the animals during transport.** Some individuals can lose up to 10% of their formula weight.

In general, these animals regain their initial weight within a few days of delivery, depending on their housing conditions and their hierarchical position in the group.

STRAIN CHARACTERISTICS:

Certain strains have physiological and behavioural characteristics which are specific to them and which must be taken into account when ordering models. The FAQ on our website helps you find out more about this: <https://www.janvier-labs.com/faq/>.

We are also on hand to provide you with all the information you will need to secure your order.

HEALTH STATUS:

JANVIER LABS is committed to providing standardized models of the highest genetic quality with SPF or SOPF status.

To find out the price of animals with SOPF health status, please contact us.

TRANSPORT OF PREGNANT FEMALES AND UNWEANED LITTERS:

In order to ensure the well-being of animals and comply with the legislation in force:

Pregnant females having reached more than 90% of their gestation time are prohibited for transport. In line with the relevant legislation, JANVIER LABS transport policy allows:

- Mice: pregnant females up to a maximum of 18 days gestation upon delivery
- Rats: pregnant females up to a maximum of 20 days of gestation upon delivery

The transport of pups under 7 days old is prohibited.

The exact day of parturition cannot be guaranteed due to the natural variation in the length of gestation. Furthermore, JANVIER LABS cannot guarantee the number of embryos / offspring per litter.

Pregnant females delivered are primiparous. All pregnant females ordered are billed. In order to guarantee the availability of pregnant females, we recommend that you anticipate your requests for scheduled matings.



An ex-breeder is an animal originating from uncoupled animals at the end of the cycle.

A reformed animal is an animal which is sold without age or weight criteria, subject to availability.

Gerontobiology: for the ageing of inbred or outbred old breeders, please contact us.

MICE

RESEARCH MODELS

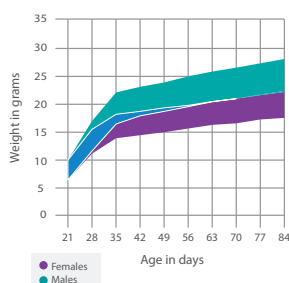
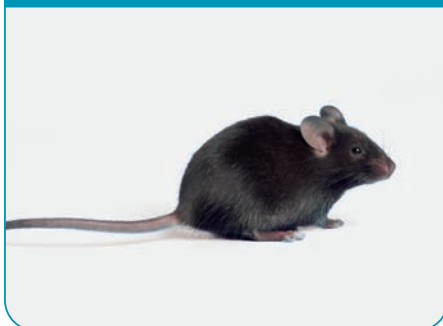
All our technical sheets available on www.janvier-labs.com



MICE MODELS STANDARD

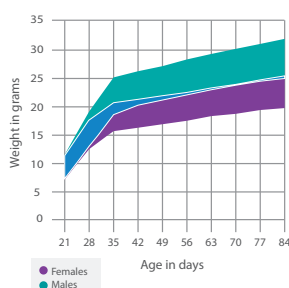
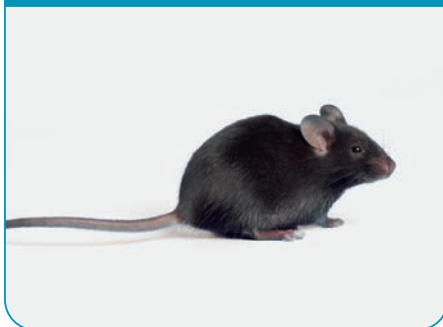
INBRED

C57BL/6JRj



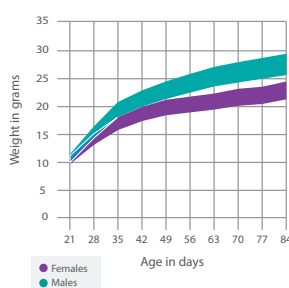
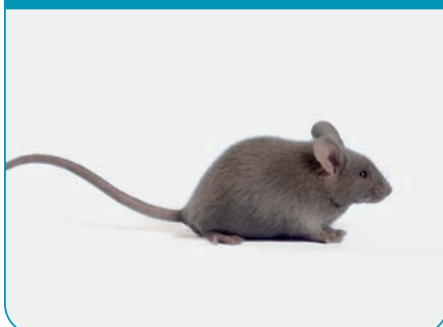
Age in weeks	Price in €	
	MALE	FEMALE
3	18,31	18,31
4	19,48	19,48
5	21,24	21,24
6	21,70	21,70
7	22,02	22,02
8	22,59	22,59
9	22,93	22,93
10	25,58	25,58
11	28,50	28,50
For each extra week Up to 15 weeks	3,09	3,09
Female with litter (5-6 pups)		132,83
Time-mated pregnant female, guaranteed at E15 on delivery date		126,93
Not-guaranted time-mated pregnant female		95,37
Old breeders	17,93	17,93

C57BL/6NRj



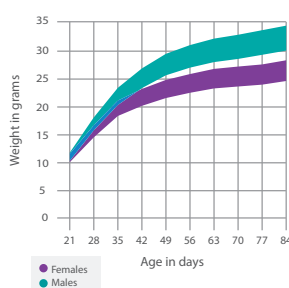
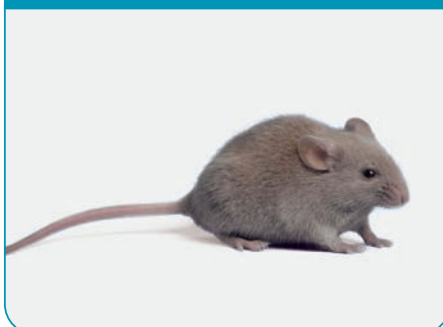
Age in weeks	Price in €	
	MALE	FEMALE
3	16,52	16,52
4	17,96	17,96
5	19,75	19,75
6	20,79	20,79
7	21,55	21,55
8	22,22	22,22
For each extra week Up to 12 weeks	3,01	3,01
Female with litter (5-6 pups)		133,26
Time-mated pregnant female, guaranteed at E15 on delivery date		129,36
Not-guaranted time-mated pregnant female		95,43
Old breeders	17,35	17,35

DBA/1 DBA/1JRj



Age in weeks	Price in €	
	MALE	FEMALE
3	29,29	29,29
4	33,47	33,47
5	37,51	37,51
6	40,23	40,23
7	45,66	45,66
8	50,41	50,41
For each extra week Up to 12 weeks	4,63	4,63
Female with litter (5-6 pups)		197,16
Time-mated pregnant female		Contact us
Old breeders	24,92	24,92

DBA/2 DBA/2JRj

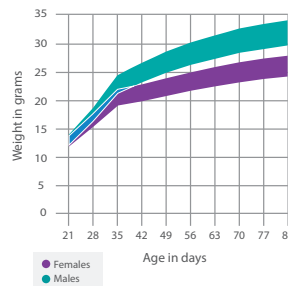


Age in weeks	Price in €	
	MALE	FEMALE
3	24,02	24,02
4	24,86	24,86
5	26,59	26,59
6	28,50	28,50
7	30,14	30,14
8	32,15	32,15
For each extra week Up to 12 weeks	3,42	3,42
Female with litter (5-6 pups)		156,57
Time-mated pregnant female		Contact us
Old breeders	21,21	21,21

MICE MODELS STANDARD

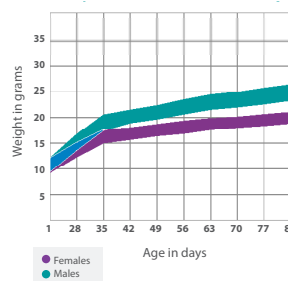
INBRED

BALB/cByJRj



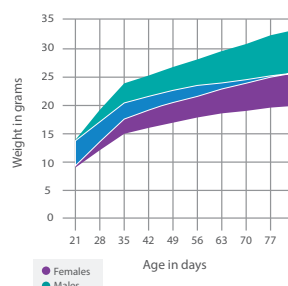
	Price in €	
Age in weeks	MALE	FEMALE
3	19,40	19,40
4	20,39	20,39
5	22,05	22,05
6	24,50	24,50
7	26,70	26,70
8	28,93	28,93
For each extra week <i>Up to 12 weeks</i>	3,75	3,75
Female with litter (5-6 pups)		229,88
Time-mated pregnant female, guaranteed at E15 on delivery date		247,56
Not-guaranted time-mated pregnant female		127,68
Old breeders	17,62	17,62

BALB/cAnNRj



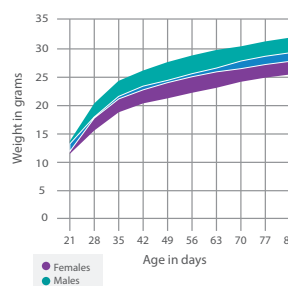
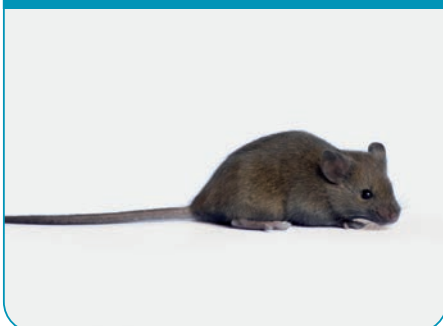
	Price in €	
Age in weeks	MALE	FEMALE
3	17,15	17,15
4	18,03	18,03
5	19,41	19,41
6	20,45	20,45
7	21,30	21,30
8	21,95	21,95
For each extra week <i>Up to 12 weeks</i>	3,31	3,31
Female with litter (5-6 pups)		128,72
Time-mated pregnant female, guaranteed at E15 on delivery date		118,57
Not-guaranted time-mated pregnant female		90,72
Old breeders	16,99	16,99

BALB/cJRj



	Price in €	
Age in weeks	MALE	FEMALE
3	17,08	17,08
4	18,46	18,46
5	19,88	19,88
6	21,45	21,45
7	22,99	22,99
8	23,96	23,96
For each extra week <i>Up to 12 weeks</i>	3,30	3,30
Female with litter (5-6 pups)		126,52
Time-mated pregnant female, guaranteed at E15 on delivery date		116,55
Not-guaranted time-mated pregnant female		91,69
Old breeders	17,08	17,08

C3H C3H/HeNRj

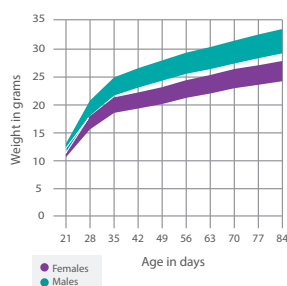


	Price in €	
Age in weeks	MALE	FEMALE
3	21,49	21,49
4	22,80	22,80
5	24,30	24,30
6	26,37	26,37
7	28,99	28,99
8	31,42	31,42
For each extra week <i>Up to 12 weeks</i>	3,12	3,12
Female with litter (5-6 pups)		153,33
Time-mated pregnant female, guaranteed at E15 on delivery date		137,53
Not-guaranted time-mated pregnant female		113,27
Old breeders	20,09	20,09

MICE MODELS STANDARD

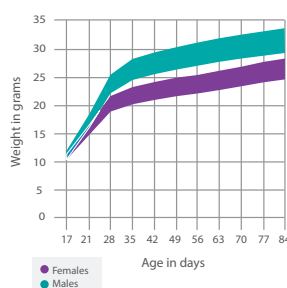
INBRED

CBA CBA/JRj



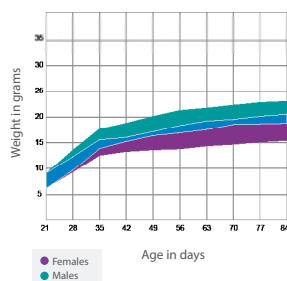
Age in weeks	Price in €	
	MALE	FEMALE
3	21,69	21,69
4	22,58	22,58
5	24,55	24,55
6	28,19	28,19
7	30,10	30,10
8	33,78	33,78
For each extra week <i>Up to 12 weeks</i>	3,52	3,52
Female with litter (5-6 pups)		140,31
Time-mated pregnant female		Contact us
Old breeders	20,86	20,86

FVB FVB/NRj



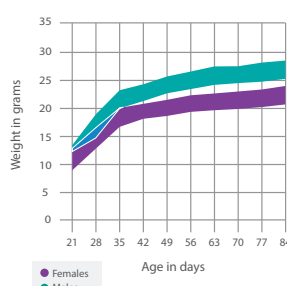
Age in weeks	Price in €	
	MALE	FEMALE
3	18,20	18,20
4	19,39	19,39
5	22,65	22,65
6	23,69	23,69
7	27,66	27,66
8	28,72	28,72
For each extra week <i>Up to 12 weeks</i>	3,49	3,49
Female with litter (5-6 pups)		136,28
Time-mated pregnant female, guaranteed at E15 on delivery date		127,48
Not-guaranted time-mated pregnant female		103,96
Old breeders	18,20	18,20

SJL SJL/JRj



Age in weeks	Price in €	
	MALE	FEMALE
3	Contact us	30,02
4		31,41
5		34,92
6		38,63
7		42,10
8		45,75
For each extra week <i>Up to 12 weeks</i>		3,72
Female with litter (5-6 pups)		180,27
Time-mated pregnant female	Contact us	
Old breeders	26,28	


129/Sv 129S2/SvPasOrLj



Age in weeks	Price in €	
	MALE	FEMALE
3	47,43	47,43
4	50,22	50,22
5	53,72	53,72
6	57,31	57,31
7	61,27	61,27
8	64,53	64,53
For each extra week <i>Up to 12 weeks</i>	3,77	3,77
Female with litter (5-6 pups)		226,98
Time-mated pregnant female		Contact us
Old breeders	47,43	47,43

MICE MODELS STANDARD

INBRED

 Cryopreserved models, price on request

B6 DIO C57BL6/JRj



Price in €			
Age in weeks	MALE	Age in weeks	MALE
7	48,54	19	121,25
8	54,60	20	127,31
9	60,66	21	133,36
10	66,72	22	139,42
11	72,78	23	145,48
12	78,84	24	151,54
13	84,89	25	157,60
14	90,95	26	163,66
15	97,01	27	169,72
16	103,07	28	175,78
17	109,13	29	181,84
18	115,19	30	187,89

NOD NOD/Rj



INBRED AGED ANIMAL

C57BL/6JRj aged mouse



In stock

Age in months	Price in €		Age in months	Price in €		Age in months	Price in €	
	MALE	FEMALE		MALE	FEMALE		MALE	FEMALE
4	66,09	61,77	11	151,83	141,90	18	242,45	Contact us
5	77,89	72,79	12	163,17	152,49	19	Contact us	
6	93,13	87,04	13	176,59	165,04	20		
7	106,47	99,51	14	189,76	177,35	21		
8	117,81	110,10	15	202,94	189,66	22		
9	129,15	120,70	16	216,11	Contact us	23		
10	140,49	131,30	17	229,28	Contact us	24		

For females older than 15 months and males older than 18 months, contact us.

Upon reservation at birth

Age in months	Price in €		Age in months	Price in €		Age in months	Price in €	
	MALE	FEMALE		MALE	FEMALE		MALE	FEMALE
4	57,71	53,94	11	97,73	91,34	18	167,21	Contact us
5	66,24	61,91	12	101,70	95,05	19		
6	70,98	66,33	13	108,35	101,26	20		
7	79,17	74	14	114,81	107,30	21		
8	85,38	79,79	15	132,86	124,16	22		
9	87,24	81,53	16	151,13	Contact us	23		
10	89,71	83,84	17	159,22	Contact us	24		

For females older than 15 months and males older than 18 months, contact us.

In stock

Depending on the characteristics of your request (nature, age and number of animals), we will tell you how long it will take to receive your animals and the "in stock" price will be applied.

Upon reservation at birth

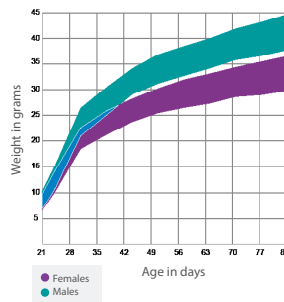
If you wish to anticipate your order and benefit from a preferential "reservation" price, our 3-month-old animals will be raised to the desired age to meet your needs.

JANVIER LABS aged C57BL/6JRj male and female mice are animals selected at weaning and are only dedicated for ageing. The animals are kept for ageing in their original production units and are bred until the age of up to 24 months in a controlled environment and health status.

Note: Our C57BL/6RJ mice have never been used as breeders.

MICE MODELS STANDARD

SWISS RjOrl:SWISS (CD-1[®])



Price in €

Weight in grams*	MALE	FEMALE
10-12	6,72	6,72
12-14	7,04	7,04
14-16	7,36	7,36
16-18	7,68	7,68
18-20	8	8
20-22	8,39	8,39
22-24	8,78	8,78
24-26	9,17	9,17
26-28	9,62	9,62
28-30	10,15	10,15
30-32	10,68	10,68
32-34	11,22	11,22
34 et +	Contact us	Contact us
Female with litter (10-12 pups)		75,64
Time-mated pregnant female, guaranteed at E15 on delivery date		65,12
Not-guaranted time-mated pregnant female		43,11
Old breeders	5,79	5,79

*weight during packaging

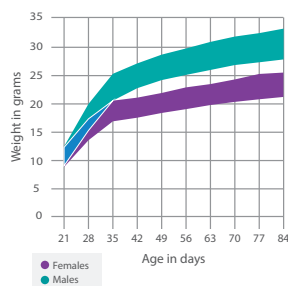
NMRI RjHan:NMRI



MICE MODELS STANDARD

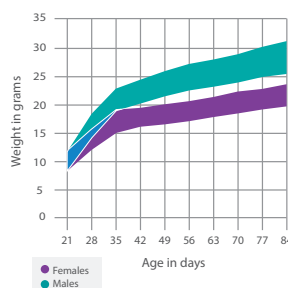
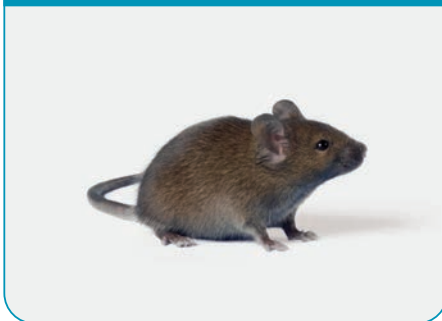
HYBRID

B6 D2F1 B6D2F1/JRj (♀ C57BL/6JRj x ♂ DBA/2JRj)



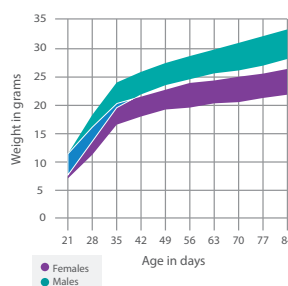
Age in weeks	Price in €	
	MALE	FEMALE
3	17,33	17,33
4	18,38	18,38
5	20,18	20,18
6	21,32	21,32
7	22,32	22,32
8	23,32	23,32
For each extra week Up to 12 weeks	1,97	1,97
Female with litter (5-6 pups)		101,79
Old breeders	17,33	17,33

B6 CBAF1 B6CBAF1/JRj (♀ C57BL/6JRj x ♂ CBA/JRj)



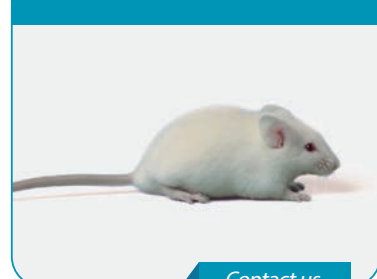
Age in weeks	Price in €	
	MALE	FEMALE
3	23,22	23,22
4	23,47	23,47
5	24,85	24,85
6	27,43	27,43
7	31,27	31,27
8	35,45	35,45
For each extra week Up to 12 weeks	3,88	3,88
Female with litter (5-6 pups)		115,21
Old breeders	23,21	23,21

B6 SJLF1 B6SJLF1/JRj (♀ C57BL/6JRj x ♂ SJL/JRj)



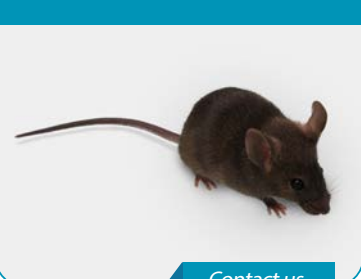
Age in weeks	Price in €	
	MALE	FEMALE
3	Contact us	29,67
4		31,25
5		33,31
6		34,39
7		36,02
8		38,02
For each extra week Up to 12 weeks		6,15
Old breeders		29,67

CSJLF1 CSJLF1/JRj (♀ BALB/cJRj x ♂ SJL/JRj)



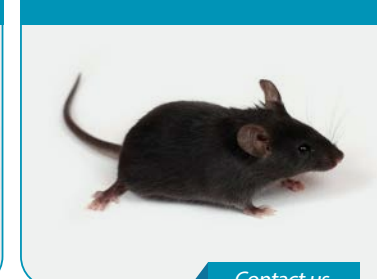
Contact us

C3D2F1 C3D2F1/JRj (♀ C3H/HeNRj x ♂ DBA/2JRj)



Contact us

B6 CF1/JRj B6CF1/JRj (♀ C57BL/6JRj x ♂ BALB/cJRj)



Contact us

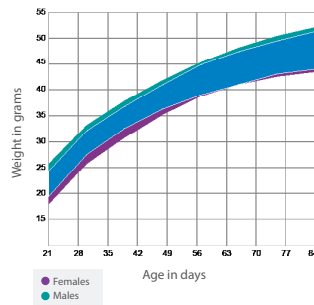
We can help
with the design
of your hybrid
model
Contact us for
more details

MICE MODELS

NATURAL MUTANT

BKS Diabetic mouse (db/db) BKS-*Lepr^{db/db}*/JOrIRj

Price in €



Age in weeks	MALE
5	152,75
6	158,17
7	167,62
8	173,59
For each extra week Up to 12 weeks	9,54
Females	On request

BKS Diabetic mouse Control BKS-*Lepr^{db/+}*/JOrIRj

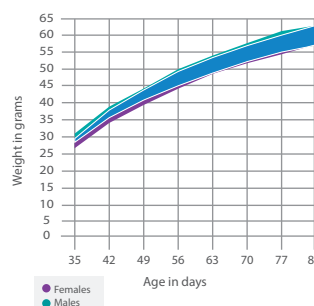
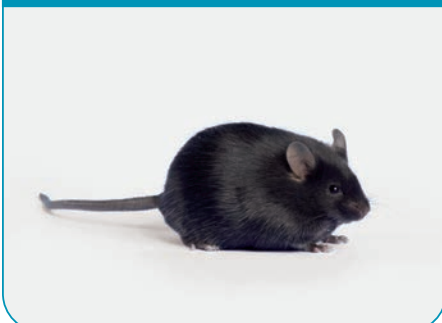
Price in €



Age in weeks	MALE
5	85,50
6	90,45
7	95,50
8	100,73
For each extra week Up to 12 weeks	6,23

B6 Obese mouse (ob/ob) B6.V-*Lep^{ob/ob}*/JRj

Price in €



Age in weeks	MALE
4	166,88
5	197,03
6	202,66
7	207,91
8	214,21
For each extra week Up to 12 weeks	9,54

B6 Obese mouse Control B6.V-*Lep^{ob/+}*/JRj Témoin

Price in €

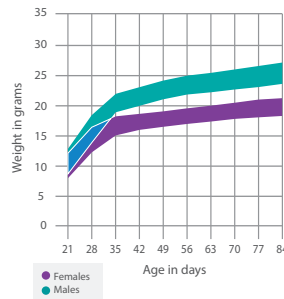


Age in weeks	MALE
4	89,48
5	106,50
6	110,99
7	115,75
8	120,49
For each extra week Up to 12 weeks	5,96

MICE MODELS NATURAL MUTANT

 Cryopreserved models, price on request

B6 Albinos B6/Rj-Tyr^{c/c}



Age in weeks	Price in €	
	MALE	FEMALE
3	31,99	31,99
4	33,43	33,43
5	34,87	34,87
6	36,38	36,38
7	39,34	39,34
8	42,31	42,31
For each extra week <i>Up to 12 weeks</i>	2,96	2,96
Female with litter (5-6 pups)		151,86
Time-mated pregnant female, guaranteed at E15 on delivery date		138,06
Not-guaranted time-mated pregnant female		92,04
Old breeders	31,99	31,99

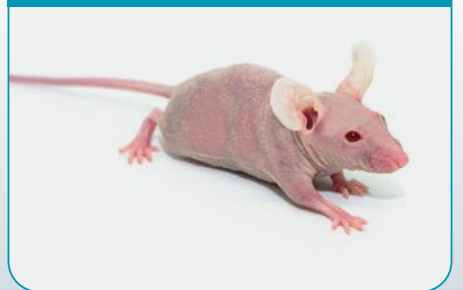
B6 Agouti C57BL/6N-A/A/Rj



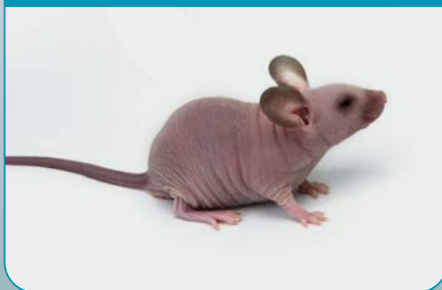
BIOZZI Asthmatic BP/2lcRj-BIOZZI



FVB Hairless FVB/N-hrth/Rj

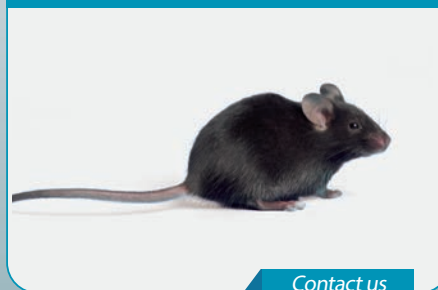


B6N Hairless C57BL/6N-hrth/Rj



B6 J CD45.1 B6 CD45.1/Rj

NEW



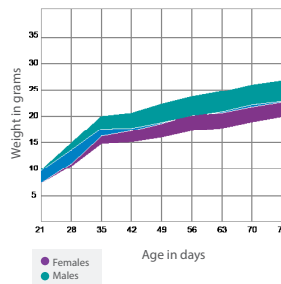
Contact us

MICE MODELS

NATURAL IMMUNODEFICIENT

ATHYMIC Nude Rj:ATHYM-Foxn1^{nu/nu}

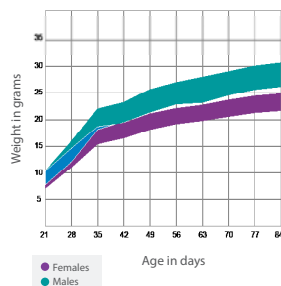
Price in €



Age in weeks	MALE	FEMALE
3	49,24	49,24
4	49,24	49,24
5	54,93	54,93
6	58,72	58,72
7	62,51	62,51
For each extra week, only for females Up to 12 weeks		5,97

BALB/c Nude BALB/cAnN-Foxn1^{nu/nu}/Rj

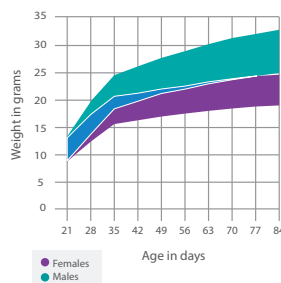
Price in €



Age in weeks	MALE	FEMALE
3	120,17	120,17
4	120,17	120,17
5	124,41	124,41
6	130,61	130,61
7	132,96	132,96
For each extra week, only for females Up to 12 weeks		6,19

CB17-Scid CB17/lcr-Prkd^{scid}/Rj

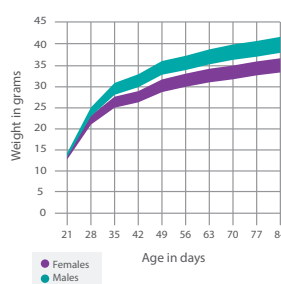
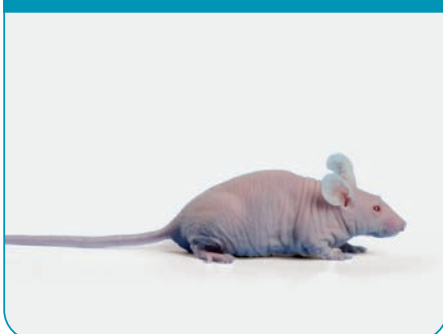
Price in €



Age in weeks	MALE	FEMALE
3	74,29	74,29
4	74,29	74,29
5	78,96	78,96
6	84,17	84,17
7	85,64	85,64
For each extra week, only for females Up to 12 weeks		5,38

NMRI Nude Rj:NMRI-Foxn1^{nu/nu}

Price in €



Age in weeks	MALE	FEMALE
3	69,70	69,70
4	69,70	69,70
5	78,68	78,68
6	84,80	84,80
7	89,73	89,73
For each extra week, only for females Up to 12 weeks		5,38

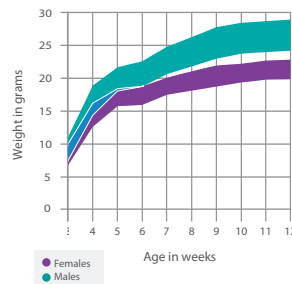
MICE MODELS

NATURAL IMMUNODEFICIENT

 Cryopreserved models, price on request

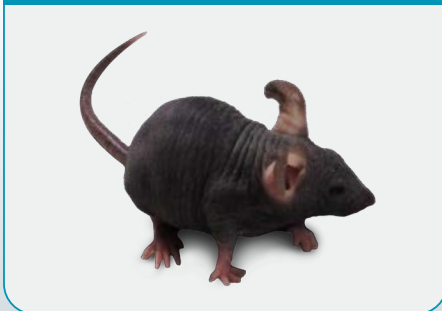
NOD-Scid NOD.CB17-Prkdc^{scid}/Rj

Price in €

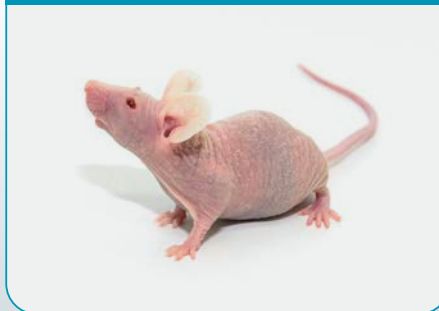


Age in weeks	MALE	FEMALE
3	126,32	126,32
4	126,32	126,32
5	129,20	129,20
6	131,87	131,87
7	142,56	142,56
For each extra week, only for females Up to 12 weeks		5,91

B6N Nude C57BL/6N-Foxn1^{nu/nu}/Rj



CB17-Scid Nude CB17/lcr-Prkdc^{scid}-Foxn1^{nu/nu}/Rj



MICE MODELS GENETICALLY ENGINEERED MODELS (GEM)

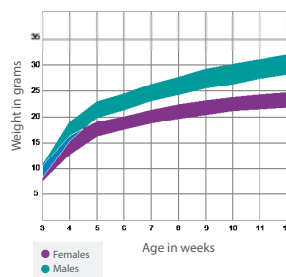
INDUCED IMMUNODEFICIENCIES

NRG NOD-Rag2^{tm1}-IL2rg^{tm1}/Rj



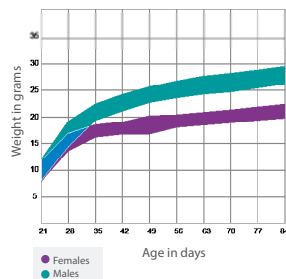
Age in weeks	Price in €	
	MALE	FEMALE
3	240,65	227,69
4	247,44	234,11
5	254,25	240,56
6	264,86	250,16
7	275,62	261,12
8	286,52	269,76
For each extra week, only for females Up to 12 weeks		5,08

NXG NOD-Prkdc^{scid}-IL2rg^{tm1}/Rj



Age in weeks	Price in €	
	MALE	FEMALE
3	176,87	176,87
4	181,87	181,87
5	186,87	186,87
6	191,87	191,87
7	196,87	196,87
8	201,87	201,87
For each extra week, only for females Up to 12 weeks		5
Time-mated pregnant female, guaranteed at E15 on delivery date		318,06

B6 Rag2 C57BL/6N-Rag2^{tm1}/CipheRj



Age in weeks	Price in €	
	MALE	FEMALE
3	134,32	134,32
4	139,42	139,42
5	144,51	144,51
6	149,61	149,61
7	154,71	154,71
For each extra week, only for females Up to 12 weeks		5,10

B6 Rag2yc sirpa C57BL/6N-Rag2^{tm1}-IL2rg^{tm1}-Sirpa^{NOD}/Rj



Age in weeks	Price in €	
	MALE	FEMALE
3	211,68	200,28
4	217,65	205,93
5	223,65	211,60
6	232,98	220,05
7	242,44	229,69
For each extra week, only for females Up to 12 weeks		4,47

MICE MODELS GENETICALLY ENGINEERED MODELS (GEM)

INDUCED IMMUNODEFICIENCIES

❄️ Cryopreserved models, price on request

NRG Ckit

NOD-Rag2^{tm1}-IL2rg^{tm1}-W41/Rj

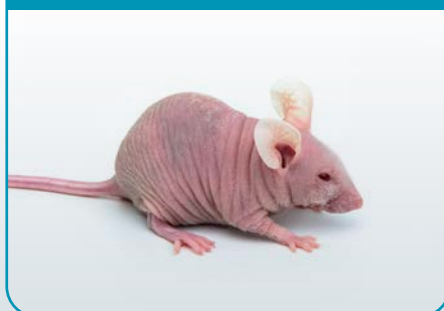
NEW



Contact us

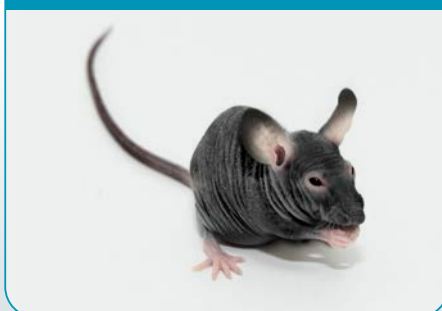
NRG Nude

NOD-Rag2^{tm1}-IL2rg^{tm1}-Foxn1^{nu/nu}/Rj ❄️



B6 Rag2 Nude

C57BL/6N-Rag2^{tm1}-Foxn1^{nu/nu}/Rj ❄️



B6 γc

C57BL/6N-IL2rg^{tm1}/CipheRj ❄️



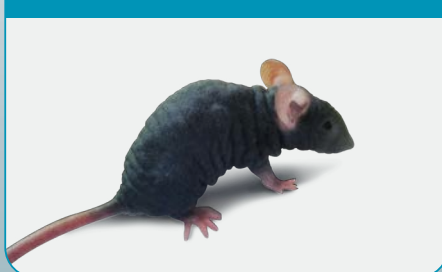
B6 Rag2γc

C57BL/6N-Rag2^{tm1}-IL2rg^{tm1}/Rj ❄️



B6 Rag2γc sirpa Nude

C57BL/6N-Rag2^{tm1}-IL2rg^{tm1}-Sirpa^{NOD}-Foxn1^{nu/nu}/Rj ❄️



NOD γc

NOD-IL2rg^{tm1}/Rj ❄️



MICE MODELS GENETICALLY ENGINEERED MODELS (GEM)

INDUCED IMMUNODEFICIENCIES WITH INCREASED FUNCTIONALITY

BRGS A2DR2 *C-Rag2^{tm1Fwa} -Il2rg^{tm1Cgn} -Sirpa^{NOD} -Tg HLA-A*02-HHD class I and HLA-DRB1*15 Class II*

Price in €



Age in weeks	MALE	FEMALE
3 to 8	Contact us	Contact us

Use of this strain is restricted to private sector users

BRGS TSLP *C-Rag2^{tm1Fwa} Il2rg^{tm1Cgn} Sirpa^{NOD} -Tg TSLP*

Price in €



Age in weeks	MALE	FEMALE
3 to 8	Contact us	Contact us

Use of this strain is restricted to private sector users


MICE MODELS GENETICALLY ENGINEERED MODELS (GEM)


HUMANIZED

NRG HIS NOD- <i>Rag^{tm1}</i> - <i>Il2rg^{tm1}</i> /Rj		Price in £	
	MALE	FEMALE	
	Contact us	Contact us	

NXG HIS NOD- <i>Prkdc^{scid}</i> - <i>Il2rg^{tm1}</i> /Rj		Price in £	
	MALE	FEMALE	
	Contact us	Contact us	

HUMANIZED WITH INCREASED FUNCTIONALITY

C- <i>Rag2^{tm1}</i> Fwa - <i>Il2rg^{tm1}</i> Cgn - <i>Sirpa^{NOD}</i> - <i>Tg</i> HLA-A*02-HHD Class I and HLA-DRB1*15 Class II		Price in £	
	Use of this strain is restricted to private sector users		
	MALE	FEMALE	
Contact us	Contact us	Contact us	

BRGS TSLP HIS C- <i>Rag2^{tm1}</i> Fwa <i>Il2rg^{tm1}</i> Cgn <i>Sirpa^{NOD}</i> - <i>Tg</i> TSLP		Price in £	
	Use of this strain is restricted to private sector users		
	MALE	FEMALE	
Contact us	Contact us	Contact us	

RATS

RESEARCH MODELS

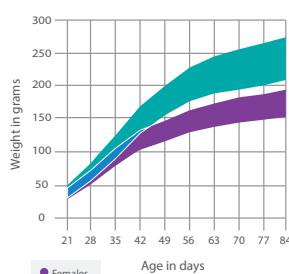
All our technical sheets available on www.janvier-labs.com



RATS MODELS STANDARD

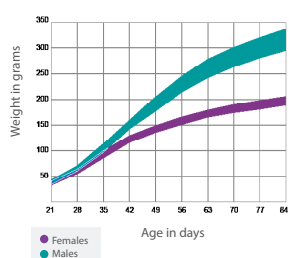
INBRED

DARK AGOUTI DA/HanRj



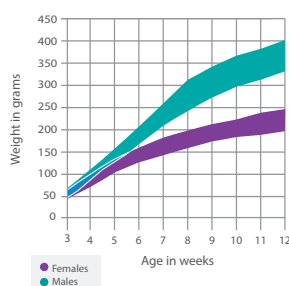
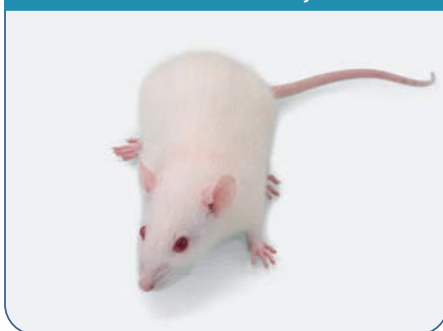
		Price in €	
Age in weeks		MALE	FEMALE
3		59,99	59,99
4		65,77	65,77
5		73,43	73,43
6		82,02	82,02
7		92,47	92,47
8		102,93	102,93
9		112,90	112,90
For each extra week Up to 12 weeks		7,05	7,05
Female with litter (5-7 pups)			205,91
Time-mated pregnant female			Contact us
Old breeders		59,99	59,99

LEWIS LEW/OrIRj



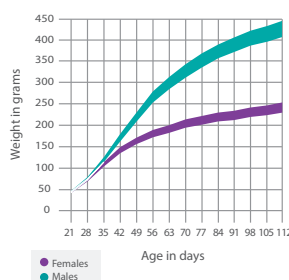
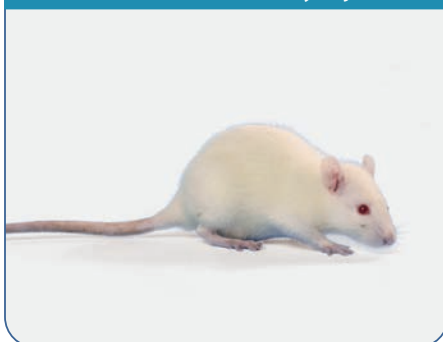
		Price in €	
Age in weeks		MALE	FEMALE
3		29,26	29,26
4		34,07	34,07
5		37,93	37,93
6		44,07	44,07
7		49,86	49,86
8		55,97	55,97
9		60,63	60,63
For each extra week Up to 12 weeks		6,02	6,02
Female with litter (5-7 pups)			215,74
Time-mated pregnant female, guaranteed at E15 on delivery date			217,40
Not-guaranted time-mated pregnant female			138,69
Old breeders		29,26	29,26

FISCHER F344/HanZtmRj



		Price in €	
Age in weeks		MALE	FEMALE
3		37,84	37,84
4		39,82	39,82
5		45,06	45,06
6		49,74	49,74
7		57,26	57,26
8		60,32	60,32
For each extra week Up to 12 weeks		5,26	5,26
Female with litter (5-7 pups)			285,04
Time-mated pregnant female			Contact us
Old breeders		37,84	37,84

WISTAR KYOTO WKY/KyoRj



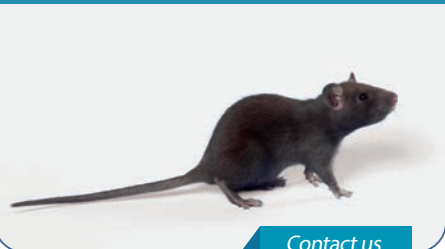
		Price in €	
Age in weeks		MALE	
3		35,54	
4		42,98	
5		46,86	
6		55,10	
7		63,69	
8		69,14	
9		79,97	
10		90,13	
11		99,86	
12		108,45	
Old breeders		35,54	
Female			Contact us

RATS MODELS STANDARD

INBRED

 Cryopreserved models, price on request

BROWN NORWAY
BN/OrlRj



[Contact us](#)

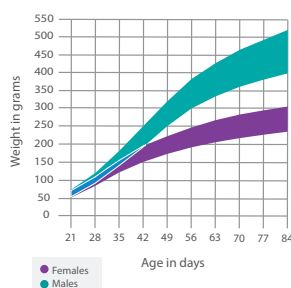
BLACK HOODED
PVG/OrlRj



RATS MODELS STANDARD

OUTBRED

WISTAR RjHan:WI

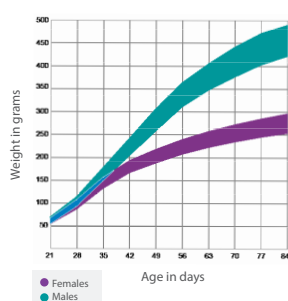


	FEMALE
Female with litter (10-12 pups)	129,70
Time-mated pregnant female, guaranteed at E15 on delivery date	121,90
Not-guaranted time-mated pregnant female	90,73

Weight in grams*	MALE	FEMALE
Up to 59	12,13	12,13
60 to 74	13,66	13,28
75 to 99	15,97	14,60
100 to 124	16,63	15,43
125 to 149	17,25	17,22
150 to 174	19,73	20,13
175 to 199	21,78	22,09
200 to 224	22,86	23,60
225 to 249	23,58	25,70
250 to 274	25,71	
275 to 299	27,98	
300 to 324	30,11	
325 to 349	34,35	
For each extra week <i>Up to 15 weeks</i>	3,12	3,12
Old breeders	12,13	12,13

*weight during packaging

SPRAGUE DAWLEY RjHan:SD (CD)

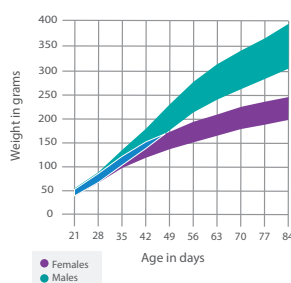


	FEMALE
Female with litter (10-12 pups)	146,37
Time-mated pregnant female, guaranteed at E15 on delivery date	140,02
Not-guaranted time-mated pregnant female	100,34

Weight in grams*	MALE	FEMALE
Up to 59	11,93	12,28
60 à 74	13,20	12,77
75 à 99	15,20	14,22
100 à 124	16,48	14,97
125 à 149	18,14	16,64
150 à 174	19,83	19,51
175 à 199	20,88	21,17
200 à 224	22,84	22,06
225 à 249	25,75	22,99
250 à 274	27,21	26,77
275 à 299	29,09	
300 à 324	33,31	
325 à 349	35,21	
For each extra week <i>Up to 12 weeks</i>	3,13	3,13
Old breeders	12,28	12,28

*weight during packaging

LONG EVANS RjOrl:LE



	FEMALE
Female with litter (10-12 pups)	111,90
Time-mated pregnant female, guaranteed at E15 on delivery date	114,88
Not-guaranted time-mated pregnant female	85,77

Weight in grams*	MALE	FEMALE
Up to 49	18,60	18,60
50 à 74	22,74	20,36
75 à 99	25,94	20,79
100 à 124	26,58	26,58
125 à 149	29,08	29,55
150 à 174	31,30	32,52
175 à 199	31,73	34,86
200 à 224	37,21	38,30
225 à 249	39,65	
250 à 274	43,15	
275 à 299	44,30	
300 à 324	49,91	
For each extra week <i>Up to 12 weeks</i>	3,24	3,24
Old breeders	18,60	18,60

*weight during packaging

RATS MODELS STANDARD

OUTBRED

 Cryopreserved models, price on request

FAWN HOODED

Rjlbm:FH



OUTBRED OLD RAT

Old WISTAR Rat RjHan:WI



In stock

Age in months	Price in €	Age in months	Price in €	Age in months	Price in €
	MALE		MALE		MALE
4	77,39	9	193,74	14	348,26
5	98,92	10	220,16	15	385,41
6	120,46	11	246,76	16	465,20
7	140,81	12	273,16	17	496,72
8	167,33	13	310,60	18	523,97

For females and animals older than 18 months, please contact us.

Upon reservation at birth

Age in months	Price in €	Age in months	Price in €	Age in months	Price in €
	MALE		MALE		MALE
4	67,58	9	140,47	14	226,15
5	86,20	10	150,89	15	270,81
6	94,95	11	170,47	16	325,31
7	112,39	12	182,74	17	344,95
8	130,15	13	204,53	18	361,36

For females and animals older than 18 months, please contact us.

In stock

Depending on the characteristics of your request (nature, age and number of animals), we will tell you how long it will take to receive your animals and the "in stock" price will be applied.

Upon reservation at birth

If you wish to anticipate your order and benefit from a preferential "reservation" price, our 3-month-old animals will be raised to the desired age to meet your needs.

JANVIER LABS aged WISTAR male rats are animals selected at weaning and are only dedicated for ageing. The animals are kept for ageing in their original production units and are bred until the age of up to 24 months in a controlled environment and health status.

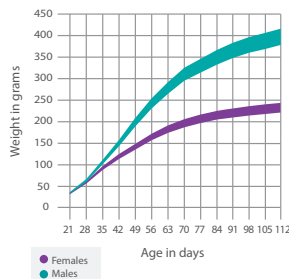
Note: WISTAR rats have never been used as breeders.

In order to evaluate the feasibility of ageing a model, don't hesitate to contact us.

RATS MODELS NATURAL MUTANT

 Cryopreserved models, price on request

SHR SHR/KyoRj



Age in weeks

Age in weeks	Price in €
3	MALE
	64,61
4	65,97
5	71,91
6	79,73
7	86,45
8	97,24
9	106,62
10	115,99
11	125,06
12	136
Old breeders	63,42
Females	On request

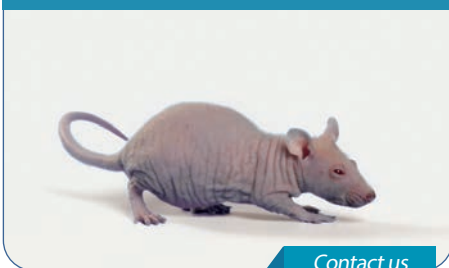
SPRAGUE DAWLEY Hairless Rj:SDH-Dsg4



RATS MODELS NATURAL IMMUNODEFICIENT

ATHYMIC Nude Rat

Rj:ATHYM-Foxn1^{mu}



Contact us

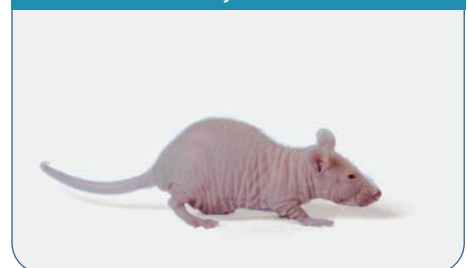
FISCHER Nude

F344/HanZtm-Foxn1^{mu}/Rj



LOU Nude

LOU/M-Foxn1^{mu}/Rj



RATS MODELS

GENETICALLY ENGINEERED MODELS (GEM)

INDUCED IMMUNODEFICIENCIES

SD Rag1
SD-Rag1 /Rj

NEW



[Contact us](#)

SD RGS
SD-Rag1-IL2rg-CD47/Rj

NEW



[Contact us](#)

OTHER RODENTS

All our technical sheets available on www.janvier-labs.com



OUTBRED

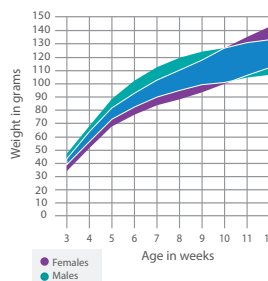
Goldhamster RjHan:AURA

Price in €



Immediate availability

A reference model for the study of COVID (Sars-CoV-2) and the development of associated therapies



Weight in grams	MALE	FEMALE
40 to 49	45,16	45,16
50 to 59	49,23	49,23
60 to 79	57,74	57,74
80 to 99	66,44	66,44
100 to 119	74,70	74,70
For each extra week <i>Up to 12 weeks</i>	9,75	9,75
Female with litter		213,80
Time-mated pregnant female		Contact us
Old breeders	45,16	45,16

*weight during packaging

Gerbille RjTub:MON



Price on request

ASSOCIATED SERVICES



SECURE AND BREED OUR MODELS

CRYOCONSERVATION

Description		Objectives and details of the services
Sperm cryopreservation using the JAX™ Sperm Cryo Kit		
Sperm cryopreservation of 2 ♂ > 10 weeks		Objective: 20 sperm flakes + quality control The service includes: <ul style="list-style-type: none"> - The reception of your animals in our animal facilities - Biopsy collection and archiving - Cryopreservation of sperm using the JAX™ Sperm Cryo Kit - <i>In vitro</i> QC performed on ♀ JANVIER LABS: sperm fertilization rate after IVF - Communication of a detailed report
Embryo cryopreservation		
Cryopreservation of embryos of your model according to the mating scheme previously defined ♂ of your model x ♀ WT JANVIER LABS of defined genetic background or ♂ of your model x ♀ of your model		Objective: 250 embryos or 150-200 frozen embryos of the line + quality control The service includes: <ul style="list-style-type: none"> - The reception of your animals in our animal facilities - Biopsy collection and archiving - Superovulation treatment of ♀ and their crossbreeding - Freezing 250 embryos or 150-200 embryos - <i>In vitro</i> quality controls; - Communication of a detailed report
Mixed cryopreservation embryos and sperm		
Mixed cryopreservation of sperm and embryos of a model		Objective: 75 to 100 frozen embryos from the line + 20 sperm flakes + quality controls: The service includes: <ul style="list-style-type: none"> - The reception of your animals in our animal facilities - Biopsy collection and archiving - Superovulation treatment of ♀ and their crossbreeding - Collection and freezing of a minimum of 75 embryos - <i>In vitro</i> quality control on each batch of frozen embryos - Cryopreservation of sperm using the JAX™ Sperm Cryo Kit - <i>In vitro</i> QC performed on ♀ JANVIER LABS: sperm fertilization rate after IVF - Communication of a detailed report
Quality control from cryopreserved sperm or embryos		
Sperm/Embryos	<i>in vitro</i> quality control (QC1)	Sperm fertilization rate after IVF + detailed report Embryo development rate after culture + detailed report
	<i>in vitro</i> quality control (QC2)	Birth rate after embryo transfer on pseudopregnant ♀ Biopsy samples for genotyping + Sending the report
Cryo-storage of straws		
Cryo-storage of frozen sperm or embryos of a model		Lined, secure and supervised Price per year and model

SECURE AND BREED OUR MODELS

ASSISTED REPRODUCTION

Model revitalization from frozen sperm	
Model revitalization from cryopreserved sperm	<p>Objectives: Restitution of a minimum of 3 to 6 males and 3 to 6 females SOPF or ♀ PREGNANT SOPF carrying embryos of the model</p> <p>The service includes:</p> <ul style="list-style-type: none"> - <i>In vitro</i> fertilization - Transfer of fertilized embryos into pseudopregnant - Isolating reimplanted ♀ and their offspring for 11 weeks (3 wk gestation + 8 wk age of line SOPF animals) - A complete health check - Communication of a detailed report - The minimum restitution of 3 to 6 males and 3 to 6 females SOPF or PREGNANT SOPF ♀
Model revitalization from frozen embryos	
Model revitalization from cryopreserved embryos	<p>Objectives: Restitution of a minimum of 3 to 6 males and 3 to 6 females SOPF or PREGNANT SOPF ♀ carrying embryos of the model</p> <p>The service includes:</p> <ul style="list-style-type: none"> - Thawing of embryos - Reimplantation of embryos in pseudopregnant - Isolator housing of reimplanted ♀ and their offspring for 11 weeks (3 wk gestation + 8 wk age of line SOPF animals) - A complete health check - Communication of detailed reports - The minimum restitution of 3 to 6 males and 3 to 6 females SOPF or PREGNANT SOPF ♀
Rederivation by embryo transfer from your model	
Decontamination of models after isolation, cleansing and transfer of embryos in SOPF surrogate mothers	<p>Objectives: Restitution of a minimum of 3 to 6 males and 3 to 6 females SOPF or PREGNANT SOPF ♀ carrying embryos of the model</p> <p>The service includes:</p> <ul style="list-style-type: none"> - The reception of your animals in our animal facilities - Biopsy collection and archiving - Coupling your ♂ with your ♀ or with predefined ♀ WT background - Collection, cleansing and transfer of embryos in pseudopregnant - Isolator housing of reimplanted ♀ and their offspring for 11 weeks (3 wk gestation + 8 wk age of line SOPF animals) - Communication of detailed reports - A complete health check - The conservation of your animals of origin remain 15 days after shipment of healthy animals. - The minimum restitution of 3 to 6 males and 3 to 6 females SOPF or PREGNANT SOPF ♀
Quick colony expansion by <i>in vitro</i> fertilisation and embryo transfer	
Production of batches of homogeneous and consistent SOPF experimental or future breeding animals by Single or Double <i>In Vitro</i> fertilization from freshly collected or thawed sperm	<p>Objectives: Restitution of batches of homogeneous experimental animals and SOPF.</p> <ul style="list-style-type: none"> - ♀ pregnant females carrying embryos of your model - SOPF animals 4 or 8 weeks old <p>The service includes:</p> <ul style="list-style-type: none"> - Production of batches of SOPF animals - Their complete health control - Return of animals generated

SECURE AND BREED OUR MODELS

Production of JANVIER LABS model animals by single or double <i>in vitro</i> fertilization in customized quantities		NEW
<p>Customized production of highly homogeneous experimental animal batches:</p> <ul style="list-style-type: none"> • Same date of birth • SOPF health status • Simultaneous production of WT or Heterozygous controls • Microbiota homogeneity 	<p>Objectives: Restitution of batches of homogeneous experimental animals and SOPF.</p> <ul style="list-style-type: none"> - pregnant ♀ - Weaned SOPF animals 3-8 weeks old as needed <p>The service includes:</p> <ul style="list-style-type: none"> - Production of batches of SOPF animals - Their complete health control - Return of animals generated 	
High Speed Backcross		
<p>Transfer of genetic modification from donor to recipient in less than one year</p>	<p>Objectives: production of inbred models with a genetic modification of interest taken from another model or a non-insulated model</p> <p>The service includes:</p> <ul style="list-style-type: none"> - The reception of your animals in our animal facilities - Biopsy collection and archiving - Performing 5 genetic purification <i>in vitro</i> fertilizations; - Transfer of fertilized embryos into pseudogestants - Housing in isolator of reimplanted ♀ - Genetic controls of ♀ products - The return of inbred stock of interest - A complete health check - Communication of a detailed report 	
Options		
	<i>In vivo</i> quality control	Birth rate: number of pups / number of embryos reimplanted
	Animal identifications and biopsies obtained	Electronic identification (ISO standard) + ear or caudal biopsies
Quick colony expansion by <i>in vitro</i> fertilisation and embryo transfer		
<p>Pooling of several Reproductive Sciences services such as the production of SOPF animals of your model and its cryopreservation</p>	<p>Objectives:</p> <ul style="list-style-type: none"> - Sharing of the costs of repatriation, accommodation of your animals and handling. - Attractive rates 	

SECURE OUR RESEARCH

whilst saving resources through sperm cryopreservation of your mice with the JAX™ Sperm Cryo Kit*



THE KIT CONSISTS OF 2 PARTS:

Media

- 3 ml vials, a vial is provided per strain
- In each Kit, an additional vial is included for training purposes

25 straws are provided per strain in each Kit

- 20 for storage and 5 extra
- 4 cassettes for permanent storage and transport which contain 5 straws each
- Straws and cassettes with unique identification numbers

CRYOPRESERVATION OF SPERM:

- Enables you to **dramatically reduce costs** associated with mouse colony maintenance, particularly of low use strains
- **Protects your valuable mouse strains** against disease, breeding cessation and disaster

Protects your research by:

- Limiting genetic drift
- Preventing the spontaneous loss of phenotype
- Enabling easy recovery of SOPF mice: no quarantine required upon arrival
- Facilitating strain transfer to collaborators

SPERM CRYOPRESERVATION KIT

Sperm cryopreservation kit

JAX™ Sperm Cryo Kit

Technical sheet available on www.janvier-labs.com

for 3 strains, for 6 strains and for 9 strains

CUSTOMISED OUR MODELS GENETICALLY MODIFIED

EMBRYO KITS TO FACILITATE YOUR RESEARCH

NEW

Embryo kit for disposal directly from embryos at different preimplantation stages of JANVIER LABS genetic background



Description	Objectives and details of the services
Embryo Kits <i>Technical sheet available on www.janvier-labs.com</i>	
EAZYGOTE - Zygotes Kit	
Small	250 frozen zygotes
Large	1,000 frozen zygotes
QUICKBLASTO® (blastocysts for ES cell injection)	
Small	250 frozen embryos
Large	1,000 frozen embryos
2CELL KIT	
Small	250 frozen 2-cell stage embryos
Large	1,000 frozen 2-cell stage embryoembryo
MII Oocytes	
Small	250 frozen MII Oocytes
Large	1,000 frozen MII Oocytes

QUICKBLASTO® is a registered trademark of JANVIER LABS. All rights reserved.

CUSTOMISED MODELS SUPPORT

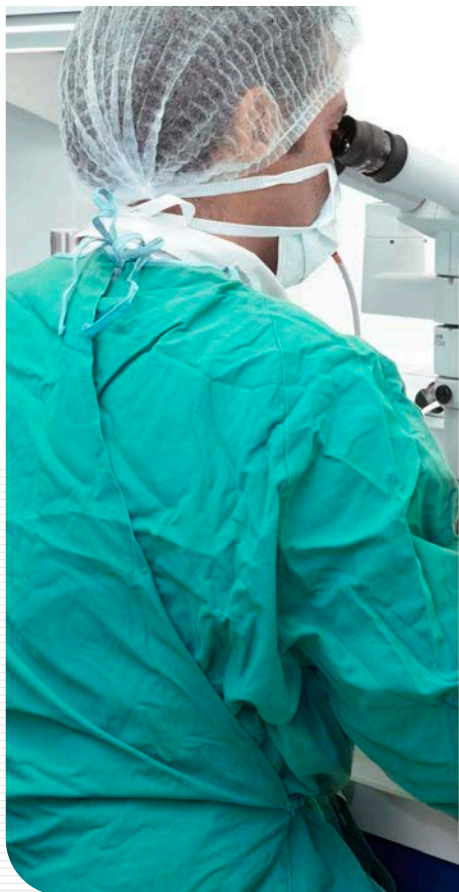
Choose a complete support of your model, from the creation by our partners to delivery

JANVIER LABS has created a department « Customised Models Support » to support the creation of genetically modified research models (overexpression of genes, knock-out, knock-in, RNAi, genetrapp, conditional or inducible systems,....).

You want to create your genetically modified mouse or rat model?

Benefit from our partners for the creation of models and a complete support by our departments from the creation until the delivery taking advantage of all our associated services.

All stages of your project are supported by a unique and dedicated project manager in order to assure the strict respect of your needs and your requirements. Our project managers are characterized by their responsiveness, their professionalism, their expertise and their ability to adapt to the customer's goals.



FLEXIBILITY • RESPONSIVENESS • PROFESSIONALISM • EXPERTISE • TRACEABILITY

CUSTOMISED BREEDING

Your project is supported by a dedicated Project Manager who will accompany you, inform you and advise you throughout the process. From the establishment of the strategy focused on achieving your objectives, until the delivery of your animals of interest, our Project Managers are distinguished by their responsiveness, their professionalism and their ability to adapt to your objectives.

Description

Customised breeding - SPF⁴ or SOPF^{4,5} statut

- Each Breeding strategy is personalized according to the needs and specificities of each project
- Mating, weaning, separation, euthanasia, gestation monitoring
- SOPF or SPF health monitoring controls
- Follow-up and scientific support of the project by a dedicated project manager
- Communication of a monthly follow-up report - Monthly videoconferencing
- Dedicated customised breeding software (AniBio), 24/7 (module animals, breeding, financial management, services) :

Genetic analysis

- Evaluation of the genetic purity of a line by analysis of 10,000 SNPs (estimation of inbreeding, identification of primary and secondary genetic backgrounds, presence of certain genetic constructs, etc.)
- Real-time PCR genotyping for one or more genes per gene
 - Fast and reliable results (24 to 48 hours)
 - Development of PCR protocols

Speed Congenics

- Analysis at each generation of a panel of 10,000 SNPs (mouse) or 740 SNPs (rat)
- At least 50% time reduction compared to classic backcross
- In a maximum of 5 generations, the animals are composed of more than 99.9% of the recipient genome => obtaining a congenic lineage
- Congenic lineages reduce phenotypic variability due to genetic background => reproducible experiments over time

¹ Biopsies for genotyping if necessary

² This service can be performed by The Jackson Laboratory

³ Subject to the quality of the provided material in case of cryopreservation externally

⁴ Free from all pathogens registered in the FELASA list

⁵ Free from opportunists defined by JANVIER LABS

PREPARE OUR MODELS

BIOLOGICAL PRODUCTS

Price on request

Products	Species and characteristics of the models
Blood products	
Whole blood	All species
Plasma	All species
Serum	All species
Serum for embryo culture	Outbred rat

Products	Species and characteristics of the models
Organ sampling	
Nervous system Brain with or without the cerebellum, spinal cord, pituitary gland	All species
Endocrine system Adrenal glands, thyroid	
Immune system Thymus, spleen, lymph node	
Digestive system Tongue, salivary glands, stomach, intestine (duodenum, jejunum, ileum), caecum, colon, liver, pancreas, esophagus	
Adipose tissue Mesenteric adipose tissue, peri-gonadal adipose tissue, Perirenal adipose tissue, brown adipose tissue	
Urogenital system Kidneys, bladder, prostate, testes, seminal vesicle, ovaries, uterus	
Cardiopulmonary system Lungs, heart, trachea, artery	
Other: skin, bones, muscle, eyes, tail...	

Products	Species and characteristics of the models
Other biological materials	
Urine	Rats, mice
Feces	All species
Milk (rat, mouse)	Rats, mice
Amniotic fluid	All species
Cerebrospinal fluid	Rats



BENEFIT FROM A LARGE RANGE OF SERVICES TO FACILITATE YOUR RESEARCH

SURGERY

Price on request

Services	Species and characteristics of the models
Excision and ligature surgery	
Ovariectomy	From 4 weeks of age
Ovario-hysterectomy	
Hysterectomy	
Splenectomy	
Vasectomy	
Castration	
Adrenalectomy	
70% hepatectomy (rat, mouse)	
Nephrectomy (unilateral or 5/6)	
Tubal ligation	
Ureter ligation	
Other types of ligation	
Catheterisation	
Non-vascular catheters:	
Bile duct	Rats with a minimum weight of 200 g,
Stomach*, duodenum*, jejunum*, ileum*, colon*, intra-peritoneal* (injection)	
Bladder*	
Vascular catheters:	
Jugular vein	Pregnant female rats (from day 9-10),
Femoral vein	
Carotid artery	Mice (jugular and non-vascular catheters on the digestive tract)
Femoral artery	
Double vascular catheter	
Double vascular / non-vascular catheter	

* Infusion only

The weight of the animal required on the purchase order corresponds to the weight at the time of the operation.

The age of the animal required on the purchase order corresponds to the age at the time of shipment.

The price of the animal will be added to the price of the operation.

EXPERIMENTAL PROTOCOLS

The experimental protocol is defined according to a preliminary questionnaire sent to the researcher to define the needs, the organization of the protocol, the conditions of achievement, the objectives and its feasibility. Once the specifications have been established, they will be submitted to the JANVIER LABS ethics committee (MESR registration no. 078) for validation.

Services (non-exhaustive list of protocols)	Species and characteristics of the models
Customised protocols and models	
Examples of protocols:	
<ul style="list-style-type: none"> Restricted diet studies Inorganic or organic implant placement and subsequent monitoring including its evolution and its interaction with the animal 	All species depending on the needs of the protocol and its feasibility
Pathological models	
Examples of pathological experimental models:	
<ul style="list-style-type: none"> Surgery model: osteoporosis model in rat by ovariectomy of females Diet-induced model: induced obesity by diet, hypercholesterolemia / atherosclerosis induced by high saturated fat and cholesterol diet, hypertriglyceridemia / insulin tolerance by high fructose / sucrose diet 	All species

PACKAGING AND TRANSPORT



100% IN-HOUSE TRANSPORT

At **JANVIER LABS**, we have decided to provide this service in-house in order to reassure ourselves that it is carried out in a manner which meets our expectations. We manage the whole logistics chain from our site to the door of your animal facility.

Our transport policy outside Europe

So that the distance is not an obstacle in order for you to be supplied with quality animals, **JANVIER LABS** has selected specialized partners for the transport of laboratory animals for the most remote or specific destinations. Each of our partners has been audited and validated by our quality team and our vets.

JANVIER LABS' INNOVATION

An innovative up to date transport packaging entirely recyclable has been **designed and created by JANVIER LABS for a 100% secured transport.**



«As the SPF and SOPF status of your research models must be guaranteed under any condition»

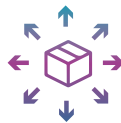
On our transport packaging you will find all the necessary information to welcome your rodents correctly



The most important transport network in Europe



45,000 kms each week under rigorous sanitary conditions



Deliveries weekly in all Europe



A team of over 25 drivers



A fleet of 23 trucks

A REPATRIATION SERVICE WHEREVER YOU ARE

4 of our vehicles are also equipped with hermetic boxes for the repatriation of non-SPF animals or biological materials (sperm or embryo).

TAKE ADVANTAGE OF OUR EXISTING CUSTOMISED TRANSPORT SERVICE

WEEKLY DELIVERIES TO BELGIUM & THE NETHERLANDS

FLEXIBILITY, REACTIVITY AND RELIABILITY!

We manage administrative procedures for your delivery.

City	Day of delivery	Price
Gosselies, Charleroi, Namur, Braine l'Alleud, Mons, Diepenbeek (Belgium)	Wednesday	On request
Marloie	Tuesday	
Liege	Wednesday	
Belgium (other towns)	Thursday	
Groningen, Enschede (The Netherlands)	Wednesday	
The Netherlands	Thursday	

Place your orders up to 6.00 p.m. 2 days before the delivery date.



Packaging (measurements)	Price
Packaging JANVIER LABS - SPF	On request
Packaging JANVIER LABS - SOPF	
Packaging for catheterised animals	
Partitioned packaging	
Dry ice packaging - large and small model	
Refreeze packaging	
Transport gel in bag (sold by 10 or 30)	

PACKAGING ADAPTED TO ANIMAL'S HEALTH STATUS

Transport gel provided

All of our packaging contains a drink substitute to rehydrate the animals during transit. This product guarantees the preservation of the SOPF and SPF status.



STRESS MANAGEMENT AND PROTECTION OF ANIMAL WELFARE DURING THE JOURNEY

In order to minimise the animals' stress during journeys, we have put appropriate measures in place, like driving on motorways and outsourced teams of drivers. Thanks to these measures the journeys are of a reduced length, without stops and more comfortable for the animals in order to guarantee optimal stability conditions for our models at the point of delivery.



YOUR SATISFACTION: OUR PRIORITY

OUR COMMITMENTS: ADAPTABILITY AND REACTIVITY

- Flexibility in order-taking
- Tailor-made response to each of your requirements
- Personalised accompaniment for your projects
- A scientific follow-up specialised in rodents breeding
- Sales assistance on hand and ready to help
- Local sales representative for your specific needs
- Team of veterinary surgeons and experts to advise you
- An ISO 9001 certified company for all our activities



MY NOTES

GENERAL TERMS AND CONDITIONS OF SALE

JANVIER LABS is a simplified joint-stock company under French law, with registered office at Genest Saint Isle (53940) – 22 Route des Chênes Secs, registered with the Trade and Companies Register of Laval under the number 340 663 079.

JANVIER LABS is specialised in the production, rearing and sale of rodents intended to be used in the framework of experimental procedures for scientific purposes (the "RESEARCH MODELS") and their by-products; as well as the supply of laboratory, reproduction sciences or custom rearing services and their associated services, even sold separately (the "SERVICES").

1 - SCOPE

1.1 Pursuant to article L 441-1 III of the Code de commerce (French Code of Commerce), the present General Terms and Conditions of Sale and Services ("GTC") constitute the unique basis for commercial relations between the Parties.

They apply to all of the sales of JANVIER LABS to its customers, professional buyers (the "CUSTOMER"), RESEARCH MODELS their by-products and sub-products, or "SERVICES" (together the "PRODUCTS"), such as these PRODUCTS are described in the JANVIER LABS catalogue (the "CATALOGUE") on its website <http://www.janvier-labs.com>, and/or in the quotations, bids or equivalent documents, emanating from JANVIER LABS.

1.2 The information appearing in the CATALOGUE, the prospectus and JANVIER LABS's tariff are given for information only. They can be modified at any time by JANVIER LABS.

1.3 The GTC are given in the CATALOGUE and given in annex to bids from JANVIER LABS. They are also available on the JANVIER LABS website.

1.4 By placing an order, the CUSTOMER recognises having read these GTC and having accepted them without reservations (hereafter the "ORDER"). The CUSTOMER undertakes to have these GTC complied with by their employees and any third party collaborating in the research that they conduct or in which they participate. By doing so, they renounce seeking precedence from any contradictory document, in particular their own general terms and conditions of purchasing.

1.5 Waivers to the present GTC negotiated and accepted by JANVIER LABS must be subject to a written agreement produced prior to their application and validated by JANVIER LABS.

1.6 The fact of not exercising the prerogative recognised by these GTC at any given time, or of not requiring the execution of one of its clauses, can under no circumstances be interpreted as a modification of such a clause, nor as an express or tacit renunciation by JANVIER LABS of the right to exercise said prerogative or to require its execution in the future.

2 - VALIDITY OF THE GENERAL TERMS AND CONDITIONS

2.1 JANVIER LABS reserves the right to modify its GTC at any time. The new GTC will be applicable to ORDERS placed as of their publication.

2.2 The GTC in force are published on the website of JANVIER LABS. They are available therefore at any time.

3 - FORMATION OF THE ORDER

3.1 JANVIER LABS can provide advice in the framework of ORDER placing. However, as a professional specialised in the area of research, the CUSTOMER remains entirely and solely responsible for their choice of ORDER and the completeness of the information they transmit to JANVIER LABS.

3.2 CUSTOMER's duty of information and prerequisites:

In particular with regard to SERVICES to perform on biological material provided by the CUSTOMER or by a third party at the request of the CUSTOMER (hereafter the "BIOLOGICAL MATERIAL"), the CUSTOMER undertakes to provide JANVIER LABS beforehand, in the request for quotation, with all information that they have concerning the BIOLOGICAL MATERIAL, in particular, any difficulties concerning the reproduction performance of the rodent lines concerned, that could have consequences for the execution of the SERVICES.

When the BIOLOGICAL MATERIAL contains GMOs, it must correspond to the GMO risk class I, to the exclusion of any other risk class. The CUSTOMER must provide JANVIER LABS with a copy of the proof of receipt of the declaration or a copy of the agreement indicating the project(s) involving the GMOs concerned.

The BIOLOGICAL MATERIAL must be free from zoonosis.

This information provided by the CUSTOMER concerning SERVICES, the Project Information Sheet and the GTC in all cases form an integral part of the ORDER.

3.3 Order:

To validate the ORDER, the bid or the quotation must be accepted in writing, including by email, and received by JANVIER LABS before the end of validity of the bid. The ORDER is only validly formed after its express acceptance by JANVIER LABS, via the acknowledgement of receipt of the order addressed to the CUSTOMER (the "ARO") and the payment of the down payment possibly stipulated. The CUSTOMER then has a period of 12 working hours to verify the content of the ARO and to formulate any comments. In case of difference between the ARO and the ORDER, the ARO shall prevail.

If the SERVICE requires authorisation from the French Ministry of Higher Education Research and innovation (MESRI – Ministère de l'Enseignement Supérieur, de la Recherche et de l'Innovation), the validity of the ORDER is conditional upon the authorisation accorded to JANVIER LABS by the MESRI.

3.4 JANVIER LABS reserves the right to suspend or refuse any new ORDER from the CUSTOMER in case of non-payment or doubt concerning the creditworthiness of said CUSTOMER, without said CUSTOMER being able to argue an unjustified refusal of a sale, nor to expect compensation.

4 - MODIFICATION/CANCELLATION OF THE ORDER

4.1 ORDERS are irrevocable after the 12 hours specified in paragraph 3.3.

4.2 Any request made by the CUSTOMER for possible modifications can only be taken into account subject to JANVIER LABS's means and at its sole discretion if the request is made in writing prior to the planned date for delivery or execution of PRODUCTS concerned. JANVIER LABS could make changes to the ORDER subject to the CLIENT signing a specific purchase order, in particular in case of adjustment of the price and delivery date.

4.3 In case of cancellation of the ORDER by the CUSTOMER, after the ARO has become final and for whatever reason, apart from force majeure, the down payment paid will be kept by JANVIER LABS by rights. It will be deducted from the amount of penalties or costs mentioned below if they are greater.

In any case, the CUSTOMER must pay depending on the circumstance:

a) For the SERVICES: (i) for the part of the SERVICES already performed, (ii) for any non-cancellable expense undertaken by JANVIER LABS and (iii) for the costs incurred by JANVIER LABS by this cancellation of the ORDER.

b) For the RESEARCH MODELS, their by-products and sub-products: a penalty calculated

on the total amount (excl. VAT) of the RESEARCH MODELS, by-products or sub-products concerned, depending on the number of whole working days to come between the delivery date established by the ARO and the date of reception by JANVIER LABS of the request for cancellation of the ORDER.

Thus: For ORDERS of non-mutant RESEARCH MODELS, less than 3 months old, their by-products or sub-products, mentioned in the CATALOGUE, the penalty will be:

- 10% for a request received 28 to 22 days before the delivery date;
- 25% for a request received 21 to 15 days before the delivery date;
- 50% for a request received 14 to 8 days before the delivery date;
- 75% for a request received 7 to 3 days before the delivery date;
- 100% for a request received less than 3 days before the delivery.

For ORDERS of non-mutant RESEARCH MODELS, aged 3 to 18 months old, their by-products or sub-products mentioned in the CATALOGUE, the penalty will be:

- 10% for a request received 28 to 22 days before the delivery date;
- 25% for a request received 21 to 15 days before the delivery date;
- 75% for a request received 14 to 8 days before the delivery date;
- 100% for a request received less than 8 days before the delivery date

For ORDERS of RESEARCH MODELS of 19 months and more, their by-products and sub-products mentioned in the CATALOGUE, the penalty will be:

- 50% for a request received less than 30 days before the delivery date;
- 100% for a request received to 30 days and less before the delivery date.

For other ORDERS of RESEARCH MODELS, their by-products and sub-products not mentioned or whose particularities are not specified in the CATALOGUE, the penalty will be 100%, i.e. the amount (excl VAT) of the ORDER, irrespective of the prior notice.

5 - TRANSPORT

5.1 Safeguard

Before the transfer of BIOLOGICAL MATERIAL, CUSTOMER must perform a backup of the corresponding strain of rodents, (i) until JANVIER LABS confirms the execution of the provisions of laboratory or the reproduction sciences service, or (ii) until the first cohort of animals coming from the custom breeding service has been delivered.

5.2 Pick-up of BIOLOGICAL MATERIAL

The CUSTOMER is responsible for the preparation, packing, packaging and labelling of the parcels in compliance with the applicable regulations in all countries of transit. The CUSTOMER must provide the information and documents required by JANVIER LABS or the shipper within a maximum of five 5 working days prior to the pick-up of said BIOLOGICAL MATERIAL. This obligation concerns in particular the authorisations required by the regulations in force concerning GMOs.

5.3 Transfer of risks

Unless otherwise specified in the ARO or failing clarifications in this ARO, the transfer of risk on the PRODUCTS and/or the results of SERVICES (the "RESULTS") shall occur according to FCA Incoterm ICC 2021. Unless otherwise specified in the ARO or failing clarifications in this ARO, the transfer of risk on the BIOLOGICAL MATERIAL addressed to JANVIER LABS shall occur according to DDP Incoterm ICC 2021.

6 - DELIVERY – ACCEPTANCE

6.1 Contractual deadlines are set in the ARO.

Delays in the delivery of the PRODUCTS and/or the RESULTS or the execution of the SERVICES cannot be used as a reason for cancellation or termination of the ORDER.

6.2 Upon receipt of the PRODUCTS and/or the RESULTS, the CUSTOMER shall perform a check of their apparent conformity and formulate any reservations on the delivery slip. These reservations must be issued and confirmed in writing within 3 calendar days following receipt, both with the shipper and with JANVIER LABS, in compliance with the provisions of article L 133-3 of the Code de commerce concerning damage and loss from transport and with the intentions expressed here by the Parties concerning the apparent nonconformity. Failing this, the PRODUCTS and/or the RESULTS are considered compliant and definitively approved by the CUSTOMER without reservation.

6.3 In case of inherent defects in the delivered PRODUCTS and/or the RESULTS, non-identified upon receipt, that are revealed within a maximum period of 14 weeks as of the date of shipment, the CUSTOMER must present their claim forthwith. Following expiration of this warranty period of 14 weeks, no recourse taken against JANVIER LABS can be accepted for hidden defects.

6.4 Allegations of nonconformity or hidden defects shall only be treated by JANVIER LABS if they are presented in writing, including by mail, within the deadlines and in the form set out above. In their claim, it is up to the CUSTOMER to provide all evidence concerning the reality of the alleged defects or nonconformities.

6.5 The CUSTOMER must allow JANVIER LABS to conduct appropriate verifications that the latter considers necessary, including inspections on the CUSTOMER's site by experts from JANVIER LABS.

6.6 For sanitary reasons, no return of RESEARCH MODELS, their by-products, or sub-products and/or the RESULTS can be performed without the prior agreement of JANVIER LABS. If a return is agreed upon, only the shipper chosen by JANVIER LABS is approved for performing it. JANVIER LABS will only cover the costs of a return if the anomaly duly reported has indeed been noted by it or by its representative and if JANVIER LABS is responsible for this anomaly.

6.7 Under all circumstances, if an anomaly is noted, the CUSTOMER must immediately take all measures necessary to avoid the aggravation and/or the propagation of this anomaly and the associated harm.

6.8 The claim does not suspend the CUSTOMER's obligation of payment for the ORDERS concerned, without prejudice to the price reduction clause provided hereafter.

7 - PRICE

7.1 The price for the PRODUCTS is determined according to the tariff in force. The price of an offer is only valid during the period of validity of this offer.

7.2 The prices are unit prices and defined for a period and/or for a volume and/or an agreed and executed capacity. Unless otherwise agreed in writing by JANVIER LABS, the prices are net and without discount, EX WORKS Incoterm ICC 2021 and not including packaging, this being invoiced in addition on the basis of the CATALOGUE price. In particular (without limitation), the prices do not include transport, customs and excise duties, any taxes and insurances that remain at the expense of the CUSTOMER.

Taxes and duties due are calculated on the day of billing of the ORDERS in compliance with the texts and laws in force. Any changes in tax rates will be integrally carried over to the price. Any duty, tax or debiting charged back on the payment of the price by the CUSTOMER shall remain at their expense. The CUSTOMER must then complete the payment of the price so that JANVIER

LABS effectively receives the agreed upon net price.

7.3 The tariffs are revised annually with effect as of 1st of January. Unless otherwise stated in the ARO, renewed or extended SERVICES are subject to an annual price revision. The price revised each year will be set on the basis of the tariff in force for the SERVICE concerned.

7.4 Unless provision is made in the ARO, the SERVICE shall be tacitly renewed for an indeterminate period, unless one of the Parties has indicated its intention not to renew the SERVICE at least one 1 month prior to the end of the initial period, by registered letter with acknowledgement of receipt. Once renewed or extended, the ORDER for SERVICES can be cancelled at any time by means of a 1 month notice, sent by registered letter with acknowledgement of receipt.

8 - TERMS AND CONDITIONS OF PAYMENT

8.1 Unless otherwise specified by the ARO or in the case of a different express agreement accepted separately by JANVIER LABS, the price is payable by bank transfer to the bank account indicated by JANVIER LABS.

8.2 Invoices are payable 30 days end of month, as of their date of issuance. No discount will be applied by JANVIER LABS for cash payment or payment made before the due date of the invoice.

8.3 A down payment maybe requested for any sale of PRODUCTS. For SERVICES, the down payment is 50% (unless otherwise indicated in the ARO). The cost of transport and repatriation invoiced upon reception of BIOLOGICAL MATERIAL, in the premises of JANVIER LABS. The down payment invoice must be paid in cash, upon receipt, in the forms specified in paragraph 8.1 above.

8.4 The payment terms and conditions accorded to the CUSTOMER by JANVIER LABS depend on their creditworthiness, their payment profile and the country risk. JANVIER LABS could require the CUSTOMER at any time, including during the execution of the ORDER, to give her their accounting documents, in particular profit and loss statements, even provisional.

Moreover, if there are reasons to fear payment difficulties (first order, deterioration of the CUSTOMER account, loss or decrease of guarantee, etc.), JANVIER LABS can condition the acceptance or pursuit of the execution of the current and/or future ORDERS, at its discretion: (i) by payment of a partial or total down payment, (ii) the constitution of a sufficient bank guarantee or (iii) a cash payment.

If the CUSTOMER refuses to provide their accounts or to adhere to the payment conditions for the said ORDER(S), JANVIER LABS could suspend the execution of the current ORDERS, refuse to deliver or perform the relevant PRODUCTS without the CUSTOMER being able to argue an unjustified refusal of sale, nor to expect compensation.

8.5 Without a prior written agreement from JANVIER LABS and on condition that the reciprocal claims and debts are certain, liquid, and due, no compensation can be validly accorded between possible penalties charged to JANVIER LABS on the one hand, and the sums due to JANVIER LABS from the CUSTOMER on the other hand.

8.6 For any late payment, JANVIER LABS is automatically entitled to claim:

a) Interest for arrears at the interest rate applied by the Central European Bank in its most recent refinancing operation (on the 1st of January for the first half-year, the 1st of July for the 2nd half-year), increased by 10 points, and calculated per day of delay ascertained, from the 1st day of delay, until complete payment is received. Payment is deemed to have been made on the day when all sums due are credited to the account of JANVIER LABS'account.

b) Payment of a fixed indemnity of €50 per unpaid invoice, to cover collection costs, without prejudice to JANVIER LABS' right to claim additional compensation if the collection costs actually incurred exceed this amount.

The CUSTOMER's account will automatically be debited for these penalties.

8.8 Finally, in case of non-payment of an invoice on its due date and without prejudice to the cancellation clause specified below, JANVIER LABS could decide on the immediate payment of all invoices issued, suspend the execution of any ORDER whether current or future, and/or require the cash payment of the balance due, after formal notice going unheeded for 8 calendar days following its receipt.

9 - COMPLIANCE – GUARANTEE

9.1 On condition that the CUSTOMER has met the pre-requisites specified in article 3.2, JANVIER LABS shall guarantee that it has the administrative authorisations necessary for the exercise of its activities.

9.2 JANVIER LABS shall guarantee that PRODUCTS conform to the ARO in the framework of its best-efforts obligation. Moreover, it shall benefit from the usage tolerances in its domain. In order to assert their rights, the CUSTOMER must, at the risk of forfeiture of any related action, inform JANVIER LABS, in the forms and within the deadlines set out in the above article 6.

9.3 JANVIER LABS performs a regular health inspection, whose methods and results are accessible on its website or upon request. It undertakes to provide the information strictly necessary for the proper execution and monitoring of the ORDERS. Upon delivery of the RESEARCH MODELS and/or the RESULTS, JANVIER LABS shall deliver a health certificate corresponding to the SPF or SOPF status that it has defined, and that has been chosen by the CUSTOMER when placing the ORDER. Under all circumstances, the delivery of a health certificate does not exempt the CUSTOMER from applying their own biosafety rules and ensuring their own health protection programme with regard to the PRODUCTS or the RESULTS.

9.4 The CUSTOMER is responsible for the compliance of their activities, of their BIOLOGICAL MATERIAL, of their research protocols with respect to the regulation and the law that applies to them, (ethical rules included). They are solely responsible for the use they will make of the PRODUCTS and the RESULTS and their consequences as well as damage, costs or responsibilities that they, their employees, affiliates, agents, sub-contractors or any other third-parties suffer or undergo because of the use, storage, transfer or elimination of the PRODUCTS and RESULTS.

CUSTOMER shall indemnify and hold JANVIER LABS, its employees, affiliates, agents, and sub-contractors harmless from and against any liability, damage, costs or associated expenses (including court costs and legal fees) suffered due to the BIOLOGICAL MATERIAL, its use, its storage, its transfer or its elimination, unless a fault or serious negligence on the part of JANVIER LABS is demonstrated, exclusive of the losses claimed.

9.5 To execute the SERVICES ordered, JANVIER LABS alone decides on the care and the criteria for use of the BIOLOGICAL MATERIAL as established by the AAALAC. JANVIER LABS reserves the possibility to perform euthanasia on suffering animals constituting the BIOLOGICAL MATERIAL or the RESULTS in accordance with a pain rating scale predefined with JANVIER LABS's internal Ethics Committee. The CUSTOMER can be provided with this pain rating scale upon request.

9.6 The weight and/or the age of the RESEARCH MODELS and the RESULTS indicated on the delivery slips is that which they have at the time of their packaging for shipping in the premises of JANVIER LABS.

9.7 With regard to gestating females:

a) JANVIER LABS shall guarantee the gestation under the particular conditions of each strain of RESEARCH MODELS presented in the CATALOGUE,

b) JANVIER LABS does not guarantee the number of animals in each pregnancy nor the exact date of birthing,

c) JANVIER LABS does not guarantee the risks of interruption of gestation during the transport if the gestation is either less than at 5 days (at the time of packaging for delivery) or greater than 2/3 of the time of gestation of the strain concerned.

10 - PROPERTY

10.1 The CUSTOMER shall declare having the necessary rights and deeds for entrusting JANVIER LABS with its BIOLOGICAL MATERIAL, for the purposes of the SERVICES requested.

JANVIER LABS shall retain no right to the BIOLOGICAL MATERIAL and the RESULTS that are specifically the offspring and derivatives of the entrusted BIOLOGICAL MATERIAL.

10.2 Murine strains described in the CATALOGUE shall remain the property and/or shall remain under the exclusive control of JANVIER LABS which shall retain all the intellectual property rights associated with the PRODUCTS, photos and technical documentation. These cannot be communicated, published, ceded, copied, reproduced, modified, translated or transferred without the written authorisation of JANVIER LABS.

10.3 Moreover, any method, protocol, know-how, materiel (including biological), technical data, technology, licence, etc. implemented during the execution of SERVICES and developed by JANVIER LABS or by a third-party previous to the SERVICES' performance or at the time of their execution, are and shall remain the exclusive property of JANVIER LABS or of this third-party. Any information, document, data, or protocol handed over by JANVIER LABS to the CUSTOMER and that is not a RESULT, (the "INFORMATION") belongs to and/or shall remain under the control of JANVIER LABS.

10.4 The CUSTOMER shall undertake to use the RESEARCH MODELS exclusively for in-house research performed under their authority. It is prohibited to transfer by any means and in particular to sell, cede, rent, give or lend the RESEARCH MODELS, their by-products and sub-products to third parties including affiliates and sub-contractors. They shall undertake not to reproduce, copy, determine nor analyse the PRODUCTS whether from a chemical, biological or physical point of view, nor to perform any retro-engineering or modification operation, whether on the RESEARCH MODELS, their by-products, and sub-products.

Any transfer of the RESEARCH MODELS, their by-products and sub-products must be authorised in writing beforehand by JANVIER LABS. This agreement will be conditional in particular, without this list of conditions being exhaustive (i) upon this transfer being made without compensation; (ii) upon the RESEARCH MODELS, their by-products and sub-products being used exclusively for a specifically identified research project carried out under the authority of the CUSTOMER; and (iii) upon the rules of nomenclature of the MGI being complied with.

10.5 The CUSTOMER shall have the right of usage of the RESEARCH MODELS, their by-products, and sub-products after complete payment of the invoices associated with them and only for a use compliant with the terms of paragraphs 10.2 and 10.4 of this article.

10.6 The transfer of ownership on the RESULTS shall be effective after complete payment of the SERVICES; and the CUSTOMER may use the INFORMATION transmitted by JANVIER LABS for their own internal needs related to the use of the RESULTS within the limits set by paragraphs 10.3 and 14.1; and without other possibility of using them in particular for the purposes of reproduction, copying, modification, translation, representation with a view to cession, sales or a publication.

10.7 The CUSTOMER shall forbid the transfer of the JAXTM Sperm Cryo Kit acquired from JANVIER LABS, outside of the territory of the licence from which JANVIER LABS benefits: France, Austria, Belgium, Czech Republic, Germany, Hungary, Italy, the Netherlands, Poland, Slovakia, Spain, Switzerland, Denmark, Finland, Norway, Sweden, UK.

No guarantee shall be granted for products from the JAX tm brand including the sperm cryoconservation kit.

11 - LIABILITY

11.1 The warranty on the PRODUCTS is limited to the replacement or reimbursement of the PRODUCTS considered non-compliant or defective.

11.2 The liability of JANVIER LABS, irrespective of its nature and the form of the action, shall be limited to direct and certain material damage in the limit of the amount of the disputed ORDER. Consequently, and without this list being exhaustive, immaterial damage, operating loss and/or loss of opportunity suffered by the CUSTOMER, shall be expressly excluded from any compensation from JANVIER LABS.

11.3 JANVIER LABS shall not be liable for decisions taken by the CUSTOMER or by a third party on behalf of the CUSTOMER, in particular regarding the choice of PRODUCTS requested. It is up to the CUSTOMER and only the CUSTOMER, as a professional, to judge the adequacy of the PRODUCTS that they order for their research goals and their needs.

12 - FORCE MAJEURE

12.1 JANVIER LABS cannot be held liable for the non-execution or delay in execution of any of its obligations because of a case of force majeure.

12.2 It is expressly agreed what constitutes a case of force majeure: any difficulty of production or transport due to bad weather, acts of war, lock-outs, total or partial external or internal strikes or other work conflicts, acts of terrorism, decisions from a legal authority, fire, flood, riots, pandemic, war, explosion or other serious disturbances of the production or operation of JANVIER LABS, computer breakdowns, changes of standards or regulations, prohibitions on importing or exporting, interruptions or slow-downs of procurement and of transports, whether these events directly or indirectly affect JANVIER LABS or its suppliers or shippers, as well as any event beyond the control of JANVIER LABS and affecting the execution of its obligations.

12.3 The execution of its obligations shall be suspended throughout the whole period of force majeure. As soon as the cause of suspension of obligation no longer applies, JANVIER LABS will make its best efforts to return to normal execution of its contractual obligation as rapidly as possible. If the hindrance is definitive or exceeds 1 month, the ORDER can be cancelled 8 working days after the receipt of a registered letter with acknowledgement of receipt or any extra-judicial document mentioning the intention to cancel the sale.

12.4 The suspension of obligations or the cancellation of the ORDER because of force majeure can under no circumstances be a cause of liability for non-execution of the obligation concerned, nor induce the payment of damages and interest nor late penalties. During the suspension, each of the Parties shall remain responsible for their costs incurred by the situation.

13 - INSURANCE

GENERAL TERMS AND CONDITIONS OF SALE

Each Party shall undertake to take out civil liability insurance with a recognised solvent insurance company.

14 - CONFIDENTIALITY – PERSONAL DATA PROTECTION

14.1 Confidentiality

Any INFORMATION, provided to the CUSTOMER by JANVIER LABS in the framework of formation or execution of the ORDER is considered as confidential. Any communication of these documents to a third party must be authorised beforehand by JANVIER LABS,

This confidentiality does not apply (i) to information already in the public domain prior to its communication, or (ii) to information legally received from a third party or (iii) to information already in the possession of the CUSTOMER prior to the ORDER or (iv) to information whose disclosure is required by law.

This obligation is valid during the execution of the ORDER and for a period of 5 years after its execution.

14.2 Personal data protection

JANVIER LABS, as data controller, can store, process, and use personal data of individuals working for the CUSTOMER for needs of the contract. The personal data collected via the ORDERS placed is needed for the management of the ORDER and its execution.

This data can be communicated in-house by JANVIER LABS, in particular within the sales, technical and administrative teams. It can be sent to outside service providers to which the controller can call upon, without this list being exhaustive, for the sending of invoices, transport and delivery associated with the ORDER. The data shall not be sent outside the European Union. Personal data shall be kept throughout the period of validity of the JANVIER LABS offer and the ORDER until the complete execution of the respective obligations of the Parties. It shall be subject to archiving for the statutory retention period for commercial documents.

The CUSTOMER and more especially, their personnel concerned, shall have the right of access, rectification, objection, restriction of processing, erasure, and portability of their data, which they can exercise by email to the following address contact@janvier-labs.com, specifying their last name, first name and address and attaching a double-sided copy of their identity document. In case of difficulties related to the management of personal data, the CUSTOMER and their personnel concerned could send a claim to the CNIL (COMMISSION NATIONALE de l'INFORMATIQUE et des LIBERTES) or any other authority with jurisdiction.

The CUSTOMER shall undertake to inform any person working on their behalf, in particular their associates, representatives, employees, and agents, of their rights as listed in this clause.

15 - PUBLICATION

The CUSTOMER shall authorise JANVIER LABS to cite it as reference.

16 - SETTLEMENT

16.1. By way of derogation from the provisions of Article 1221 of the Code civil (French Civil Code), in the event of failure by one of the Parties to fulfil its obligations, the Party affected by this failure shall not be able to request enforcement in kind, without, however when it is the obligation of the payment of the sums due.

16.2 In addition, by way of derogation from the provisions of Article 1222 of the Code civil, the Party affected cannot itself have the obligation executed by a third party, at the expense of the non-compliant Party.

16.3 In accordance with Article 1223 of the Code civil, the Party affected by the non-compliance, alternatively, could notify the non-compliant Party as soon as possible of the decision to accept an imperfect execution of the obligation, with a proportional reduction of the price, as soon as the formal notice addressed to the non-compliant Party by reasoned registered letter with acknowledgement of receipt remains unheeded 15 calendar days after its receipt.

The non-compliant Party that means to accept the price reduction shall make the decision known in writing.

Failing agreement between the Parties, they shall proceed as described in the following article 17.

16.4 Failing payment of the sums due and without prejudice for other compensation rights, 15 calendar days after a formal notice remains unacknowledged, JANVIER LABS can proceed to a cancellation of the ORDER concerned at the expense of the CUSTOMER, without compensation for the CUSTOMER. JANVIER LABS shall keep the amounts already paid including any penalties to pay for the compensation of its loss.

16.5 The provisions of these GTC appearing in the sections entitled 10, 11, 14, 15 et 17 shall remain applicable despite the cancellation, termination or expiry of the ORDER whatever its form and reasons.

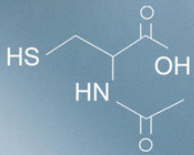
17 - APPLICABLE LAW – JURISDICTION

17.1 Any question directly or indirectly related to these GTC, or to a purchasing and sale operation that arises from them, shall be subject to French Law to the exclusion of any international or European treaty or convention, including the VIENNA Convention of 1969.

17.2 The GTC are drafted in French. When they are translated into one or more languages, only the French text shall be considered valid in case of dispute.

17.3 Failing to arrive at an amicable agreement, any dispute directly or indirectly related to an ORDER or to the GTC shall be submitted EXCLUSIVELY to the FRENCH COURT IN THE JURISDICTION OF THE REGISTERED OFFICE OF JANVIER LABS, EVEN IN THE CASE OF MULTIPLE JUDICIAL PROCEEDINGS OR THE INTRODUCTION OF THIRD PARTIES.

17.4 If any provision of these GTC be declared unwritten and/or null and void by a Court or any other administration or authority, such a decision shall under no circumstances, affect the validity of the other provisions. The Parties shall endeavour to reach an agreement on the terms of an equitable clause or part of a clause that could replace that which would thus have been declared null and void.



Route des chênes secs
53941 Le Genest Saint Isle
FRANCE

.....
T. +33 (0)2 43 02 11 91
contact@janvier-labs.com

.....
www.janvier-labs.com

PULSE 02